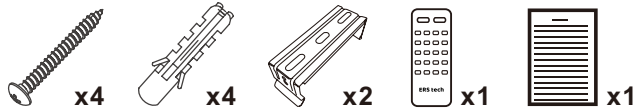


LED Tri-proof Batten Light

Accessories



Factory setting of sensor: When turn on the lamp, sensor function is closed; If you need to open the sensor, please use our remote controller as below.

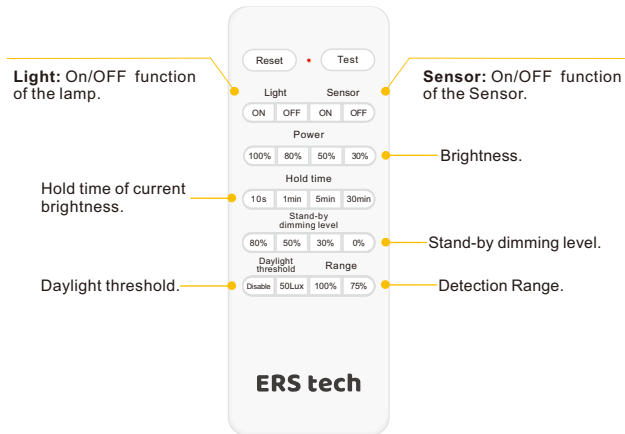
Show Case:

1. Press "Sensor" -- "ON";
2. Set the data you need.

For instance, you need the lamp holds on 1 min after you leaving the site and then dimming to half brightness, just press the "1 min" in Hold Time section, and press "50%" in stand-by dimming level section.

To open daylight sensor function, press "Sensor" to "ON", and then press "50 Lux" in Daylight threshold section; Press "Disable" to close it.

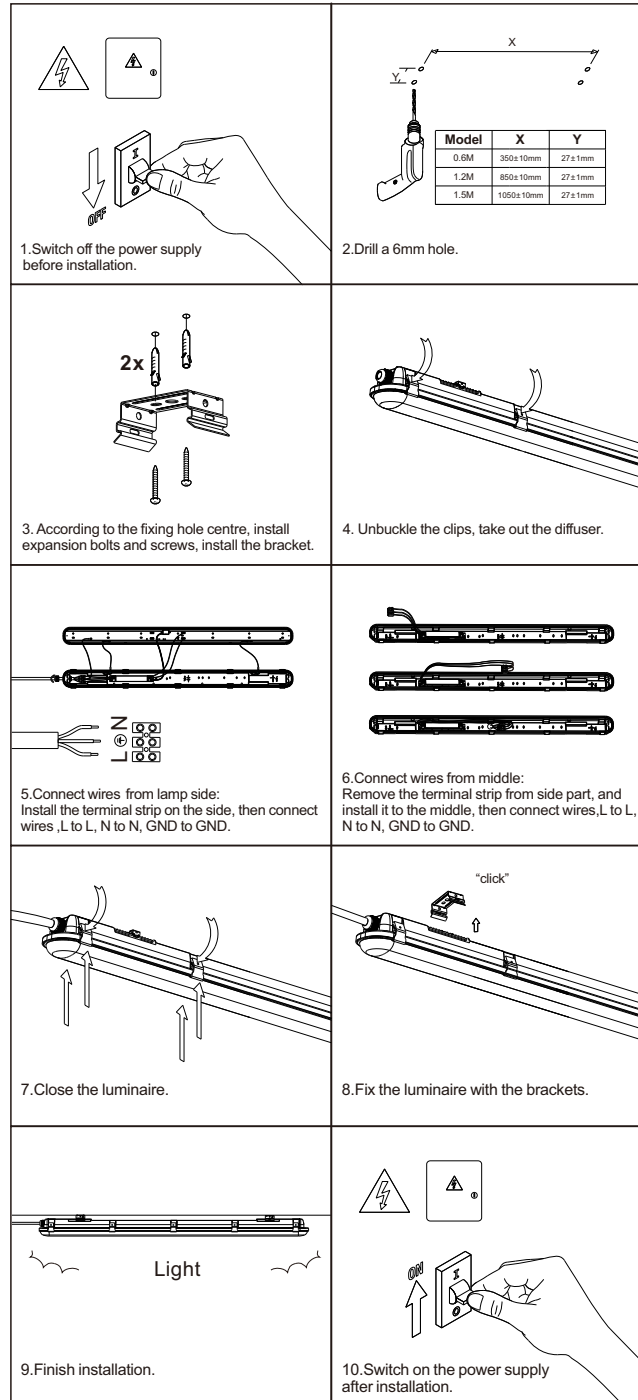
To adjust brightness, press the data you want in the "Power" section.



Technical Parameter

Input Voltage	AC220-240V,50Hz	LED Chips	SMD 2835
Beam Angle	120°	Sensor	Daylight & Microwave Motion Sensor
Driver	Philips	Dimmable	PWM
CCT	3000,4000,5000,6500K	CRI	Ra > 80
Working Temp	-20°C~+50°C	IP Rating	IP65

Installation



Reminder

We appreciate your choice!
Please read the instruction manual before installation and keep it well.

Warning

To avoid the accident of damage, falling, electric shock or fire, please do not reform the lamp or replace the accessories and confirm with us if you need to change the mounting method. Please authorize the installation to qualified installation personnel and obey to the instruction manual. Any unsuitable installation will easily cause the accident of falling, electric shock and fire etc. Please cut off the power before installation or any maintenance of the lamp. Please cut off the power when it smokes or smells awfully since the accident of fire or electric shock may incur. Ask the qualified personnel for maintenance. Please do not dismantle the lamp by yourself since the accident may incur. Please do not touch the driver when the lamp works.

Application

Indoor and outdoor lighting, with IP 65, it can be used at chicken farm, basement, car parking, warehouses, corridors, outside of building, etc.

Troubleshooting & Solutions

Malfunction	Troubleshooting	Solutions
Not working	1. Check whether the power line is properly connected.	1. Reconnect the power wire.
	2. Check whether the power plug is loosen.	2. Re-plug the loosen power plug.
	3. Driving power supply failure.	3. Call the after-sales phone to confirm the problem and replace the normal product.
	4. LED chip breakdown.	4. Call the after-sales phone to confirm the problem and replace the normal product.
	5. Daylight function is turned on.	5. Check the remote control instructions and reset.
LED dim or flashing	1. How to use the remote control to set the brightness.	1. Check the remote control instructions and reset.
	2. The sensing function turned on, and the test function turned on.	2. Check the remote control instructions and reset.
	3. The output of the driver is abnormal.	3. Call the after-sales phone to confirm the problem and replace the normal product.
	4. LED chip breakdown.	4. Call the after-sales phone to confirm the problem and replace the normal product.

Warranty

- Five years warranty.
- During the warranty period, the client shall return the failed parts by courier for inspection and repair. After inspection and repair, the supplier shall send the fixed parts or new parts back. Each party shall bear the freight cost accordingly.
- Keep the warranty card as the warranty certificate.
- The following conditions are not covered by the warranty, and the supplier provides maintenance services by charging maintenance fee:
 - (1) All artificial damages, including damages from operation, usage, storage un conformity with the instruction manual, abnormal working condition etc;
 - (2) Dismantling, maintenance, modification or unqualified repairing for the products without the supplier's authorization;
 - (3) No warranty cards and documents;
 - (4) Damages caused by user's improper delivery or due to force majeure (including fire, flood, thunder hit, earthquake etc).
- All rights reserved.

Warranty Card

Name		Type	
Number		Date	
User		Tel./E-mail	

Date	Issue	Note

Item List

1.Lamp body	— pcs	<input type="checkbox"/>
2.90 degree aluminum reflector	— pcs	<input type="checkbox"/>
3.120 degree aluminum reflector	— pcs	<input type="checkbox"/>
4.Transparent reflector	— pcs	<input type="checkbox"/>
5.Transparent reflector connecting plate and screws	— pcs	<input type="checkbox"/>
6.Aluminum reflector connecting plate,snap ring and screws	— pcs	<input type="checkbox"/>
7.Rubber ring	— pcs	<input type="checkbox"/>
8.The reflector seaing gasket	— pcs	<input type="checkbox"/>
9.Transparent reflector organic glass plate,snap ring	— pcs	<input type="checkbox"/>
10.Accessory Screws	— pcs	<input type="checkbox"/>
11.Instruction Manual (including Warranty Card and Item List)	— pcs	<input checked="" type="checkbox"/>
12.Qualification Certificate	— pcs	<input checked="" type="checkbox"/>

ERS tech

LED Tri-proof Batten Light Instruction Manual

