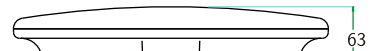
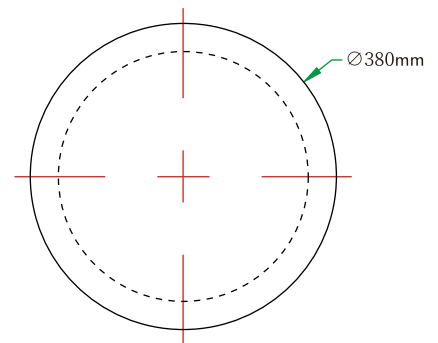
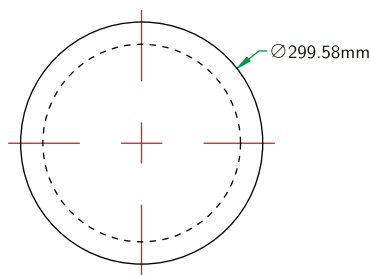
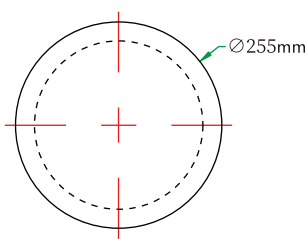


# LED Ceiling Light

## INSTRUCTION MANUAL



Built-in sensor



### Shenzhen ERS Technology

Factory Add: C209, Baohuasen International Center, Qianjin Second Road, Xixiang Town, Bao'an District, Shenzhen, China  
Warehouse Add: 57 Tarnard Dr, Braeside VIC 3195

Tel: 048 470 3010

Email: [info@erstech.com.au](mailto:info@erstech.com.au)



IPART  
Independent Pricing and Regulatory Tribunal  
New South Wales



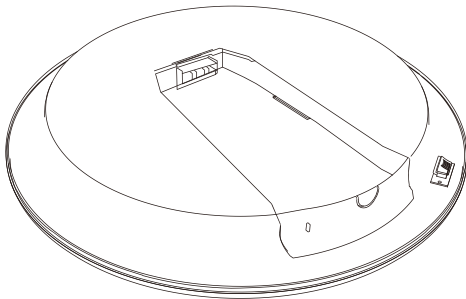
Victorian  
Energy  
Upgrades



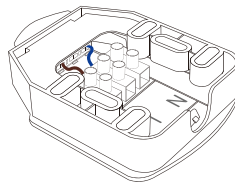
LM-80 TM 21 LM 79  
ISTMT LCP



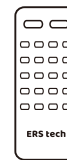
## Accessories



× 1



× 1



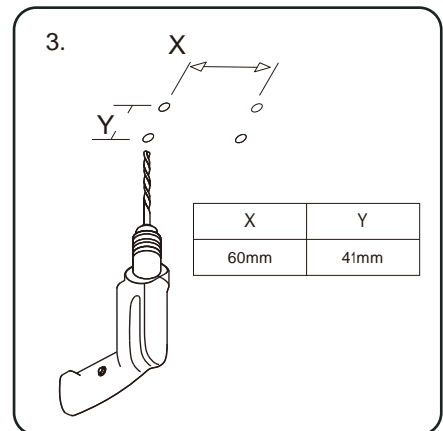
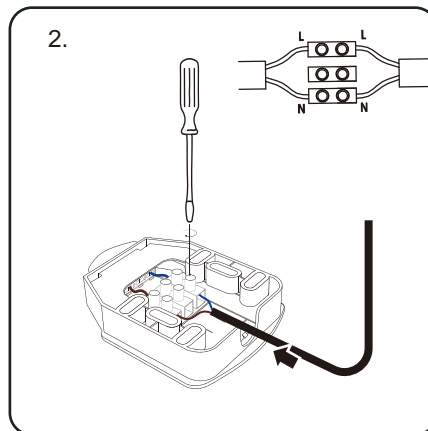
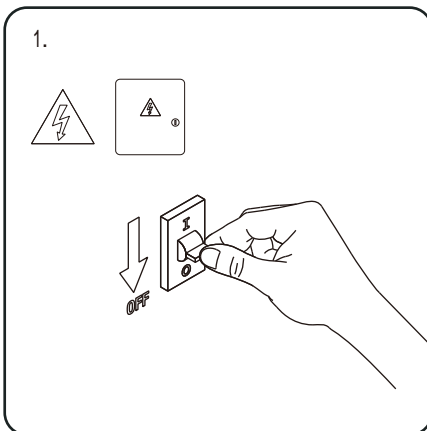
× 1



× 4



× 4



## LED Ceiling Light Installation Guide:

1. Switch off the power supply before installation ;
2. Remove the mounting base, insert the cable through the cable gland; Connect the wires, L to L, N to N;
3. Punch holes at the installation positions (X, Y) with tools ;

## Shenzhen ERS Technology

Factory Add: C209, Baohuasen International Center, Qianjin Second Road, Xixiang Town, Bao'an District, Shenzhen, China  
Warehouse Add: 57 Tarnard Dr, Braeside VIC 3195

Tel: 048 470 3010

Email: [info@erstech.com.au](mailto:info@erstech.com.au)



IPART  
Independent Pricing and Regulatory Tribunal  
New South Wales

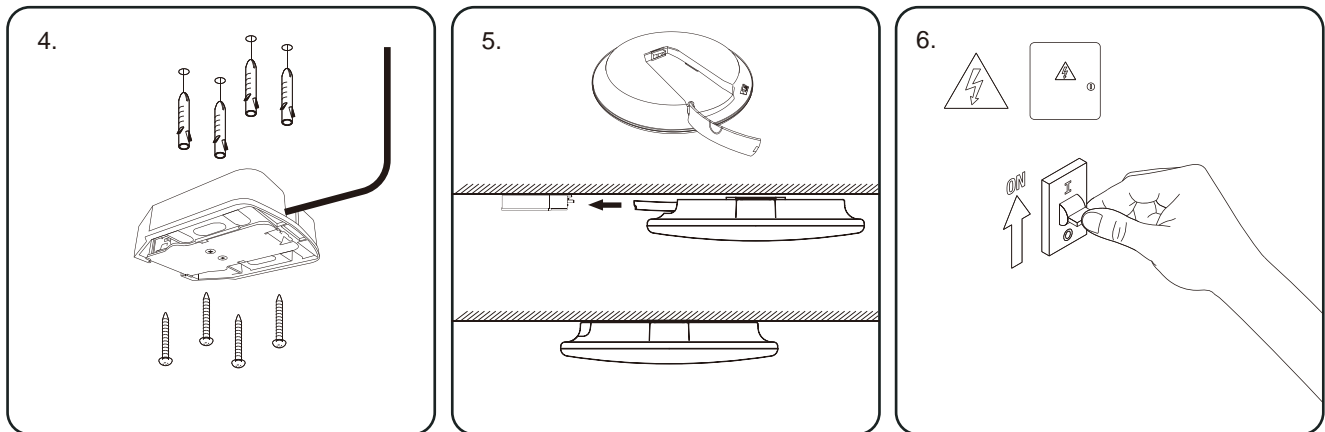


Victorian  
Energy  
Upgrades

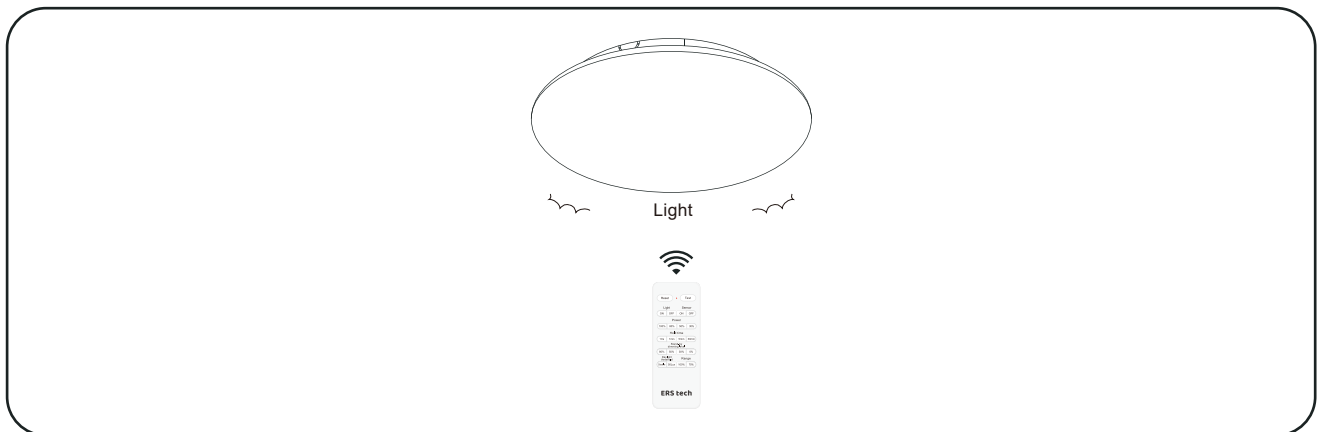


LM-80 TM 21 LM 79  
ISTMT LCP





4. Insert the expansion plug into the drilled hole and fix the installation base on the wall with screws;
5. Open the groove baffle on ceiling lamp back, insert the ceiling lamp groove to installation base, and make sure the lamp is installed & fixed to installation base, then close the baffle;
6. Switch on the power supply after installation.



## Shenzhen ERS Technology

Factory Add: C209, Baohuasen International Center, Qianjin Second Road, Xixiang Town, Bao'an District, Shenzhen, China  
Warehouse Add: 57 Tarnard Dr, Braeside VIC 3195

Tel: 048 470 3010

Email: [info@erstech.com.au](mailto:info@erstech.com.au)



**IPART**  
Independent Pricing and Regulatory Tribunal  
New South Wales



Victorian  
Energy  
Upgrades



**LM-80 TM 21 LM 79**  
**ISTMT LCP**

