

Chimney Seal Installation Instructions

The Chimney Seal is designed as an affordable solution to block chimney flues whilst not in use. It is designed to keep out cold chimney draughts and prevent warmer room air escaping up your chimney.

Installation Guide:

1. Select the appropriate size Chimney Seal by measuring the depth and width of the nearest narrowest part. Don't worry if it's an odd shape, just measure the widest bits and the wool felt will squash in to fit.
2. Remember, it's easier to fit a large Seal lower down than a small Seal high up.
3. It's very important that the handle is long enough - firstly because it's a lot easier to put in, and secondly the end of the handle must show in the fireplace so that no-one inadvertently lights a fire with the Seal in place.
4. Push the seal head into the narrow part of the flue. You may need to tug it down gently to ensure a good fit.
5. When you want to remove it, pull gently in case there is any debris collected on it that has fallen down the chimney. Tap any loose soot into the fireplace, and put it in a bag.

Description:

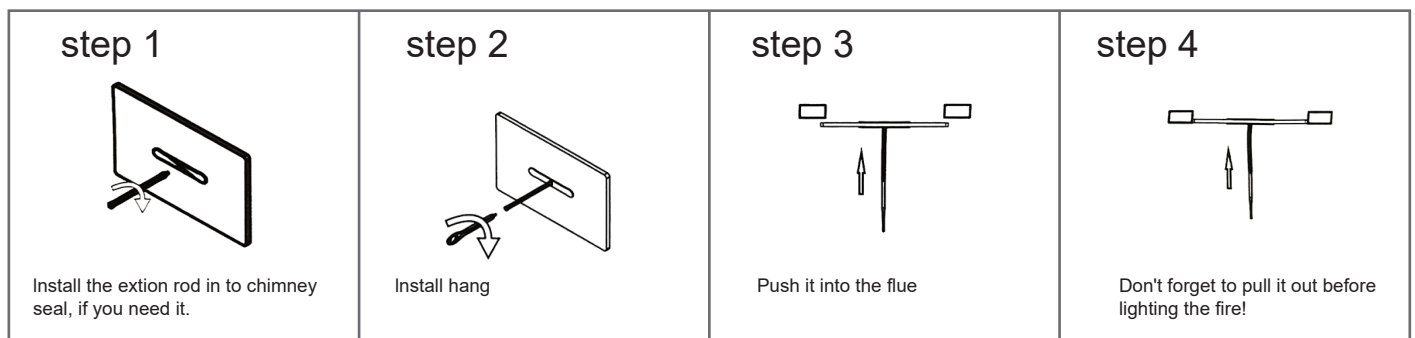
Model	SIZE
ERS-ASCH-3050	30*50CM
ERS-ASCH-4080	40*80CM

Chimney Seal Maintenance:

The Chimney Seal will inevitably get sooty and can be kept in a bag or in the log basket/coal bucket when it is not in use.

If your chimney is brick or stone on the inside it might start to get a bit frayed around the edges after frequent use. Any stray bits can be trimmed off with a pair of scissors.

If it is left in the chimney for a long time it can get a bit squashed looking. This doesn't really matter as it is taking on the shape of your flue, but you can get it back into shape by taking the clamp section out and reversing it so it squashes in the other direction.



Don't forget to pull out the Chimney Seal before lighting a fire!!!

Shenzhen ERS Technology

Factory Add: C209, Baohuasen International Center, Qianjin Second Road, Xixiang Town, Bao'an District, Shenzhen, China
Warehouse Add: 57 Tarnard Dr, Braeside VIC 3195

Tel: 048 470 3010

Email: info@erstech.com.au



Victorian Energy Upgrades



LM-80 TM 21 LM 79
ISTMT LCP

