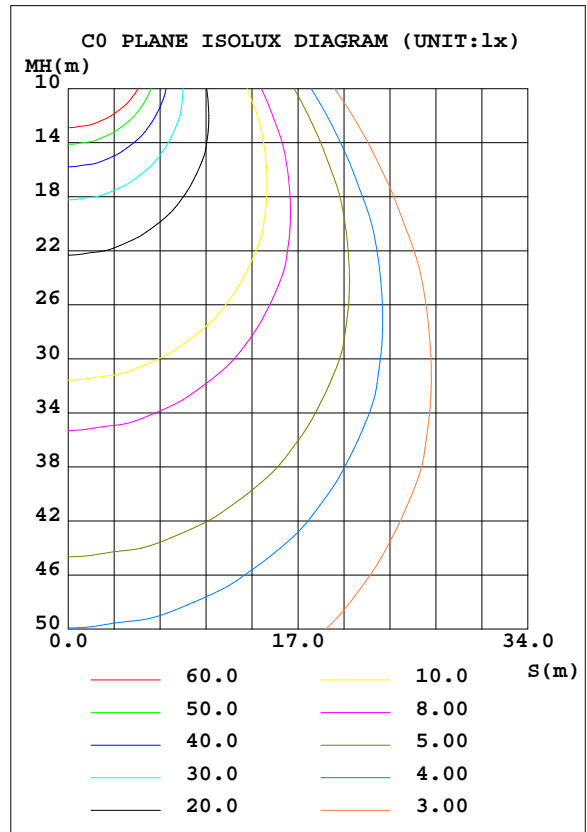
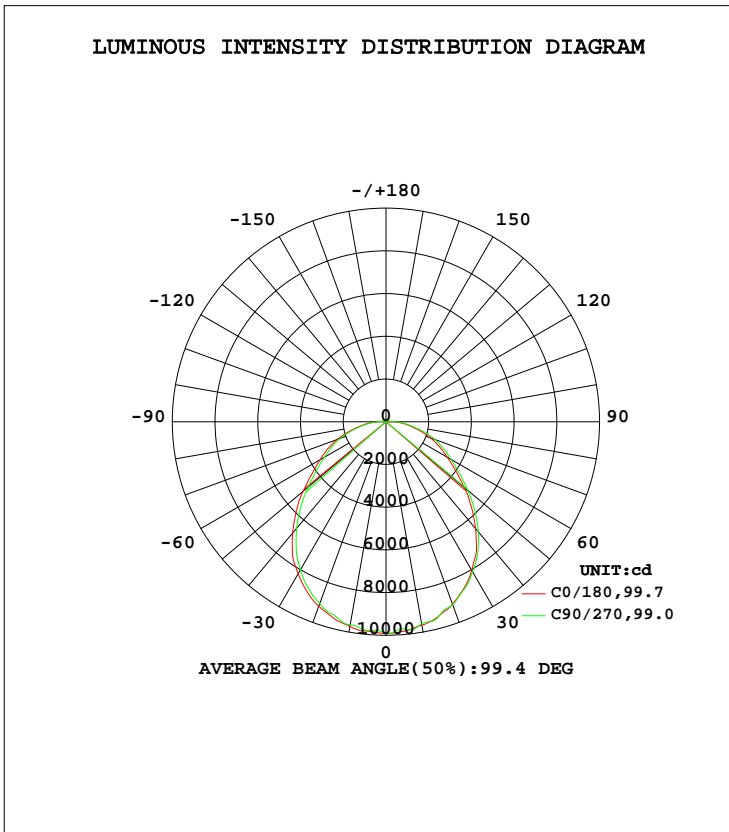


LUMINAIRE PHOTOMETRIC TEST REPORT

Test:U:230.0V I:0.8866A P:199.4W PF:0.9779 Lamp Flux:26253.4x1 lm		
NAME: LED CANOPY LIGHT	TYPE:N/A	WEIGHT:N/A
SPEC.:N/A	DIM.: N/A	SERIAL No.:N/A
MFR.: ERS	SUR.:N/A	Shielding Angle:N/A

DATA OF LAMP		PHOTOMETRIC DATA Eff: 131.66 lm/W			
MODEL	ERS-C200W-B	I _{max} (cd)	9931	S/MH(C0/180)	1.21
NOMINAL POWER(W)	200	LOR(%)	100.0	S/MH(C90/270)	1.22
RATED VOLTAGE(V)	230	TOTAL FLUX(lm)	26253	η UP, DN(C0-180)	0.5,49.0
NOMINAL FLUX(lm)	26253.4	CIE CLASS	DIRECT	η UP, DN(C180-360)	0.6,49.9
LAMPS INSIDE	1	η up(%)	1.1	CIBSE SHR NOM	1.25
TEST VOLTAGE(V)	230	η down(%)	98.9	CIBSE SHR MAX	1.35



C Range: 0 - 360DEG
 C Interval: 22.5DEG
 Test Speed: HIGH
 Temperature:25.2DEG
 Operators:East
 Test Date:2020-10-26

γ Range: 0 - 180DEG
 γ Interval: 1.0DEG
 Test System:EVERFINE GO-R5000_V2 SYSTEM V2.0.351
 Humidity:43%
 Test Distance:2.492m [K=1.0000]
 Remarks:

ZONAL FLUX DIAGRAM

ZONAL FLUX DIAGRAM:

γ	C0	C45	C90	C135	C180	C225	C270	C315	γ	Φ zone	Φ total	%lum, lamp
10	9731	9677	9651	9601	9673	9686	9602	9761	0- 10	929.4	929.4	3.54,3.54
20	9194	9102	9061	9041	9094	9112	9127	9204	10- 20	2659	3589	13.7,13.7
30	8219	8175	8012	8033	8025	8073	8120	8224	20- 30	3987	7576	28.9,28.9
40	6795	6711	6510	6545	6523	6659	6722	6816	30- 40	4649	12225	46.6,46.6
50	5069	4983	4755	4751	4796	4957	5003	5110	40- 50	4476	16700	63.6,63.6
60	3564	3418	3337	3239	3308	3443	3518	3547	50- 60	3691	20392	77.7,77.7
70	2429	2212	2287	2075	2224	2284	2442	2349	60- 70	2824	23216	88.4,88.4
80	1259	1226	1158	1133	1148	1268	1276	1326	70- 80	1853	25069	95.5,95.5
90	457.7	449.0	396.9	392.2	371.5	467.0	450.2	500.8	80- 90	896.0	25965	98.9,98.9
100	185.2	52.65	110.6	42.40	162.6	49.57	112.2	54.13	90-100	217.1	26182	99.7,99.7
110	32.49	3.521	3.379	3.547	22.35	6.038	2.454	3.785	100-110	43.71	26226	99.9,99.9
120	4.495	4.256	4.096	4.386	3.491	3.178	15.75	3.053	110-120	4.572	26230	99.9,99.9
130	6.104	6.167	6.024	6.158	4.274	3.932	3.765	3.834	120-130	4.014	26234	99.9,99.9
140	9.076	9.613	9.612	9.302	5.168	4.873	4.844	4.916	130-140	4.617	26239	99.9,99.9
150	12.71	13.85	13.84	13.41	6.086	6.069	5.976	6.157	140-150	5.338	26244	100,100
160	15.06	15.25	15.36	15.18	7.827	7.543	7.303	7.319	150-160	4.944	26249	100,100
170	13.67	13.44	13.43	13.63	9.332	8.735	8.141	8.221	160-170	3.199	26252	100,100
180	11.62	11.08	10.58	11.46	11.65	11.20	10.55	10.83	170-180	1.059	26253	100,100
DEG	LUMINOUS INTENSITY:cd									UNIT:lm		

Conical surface Flux(90deg): 14533 lm

%lum = 55.4%
%lamp = 55.4%

Conical surface Flux(120deg): 20392 lm

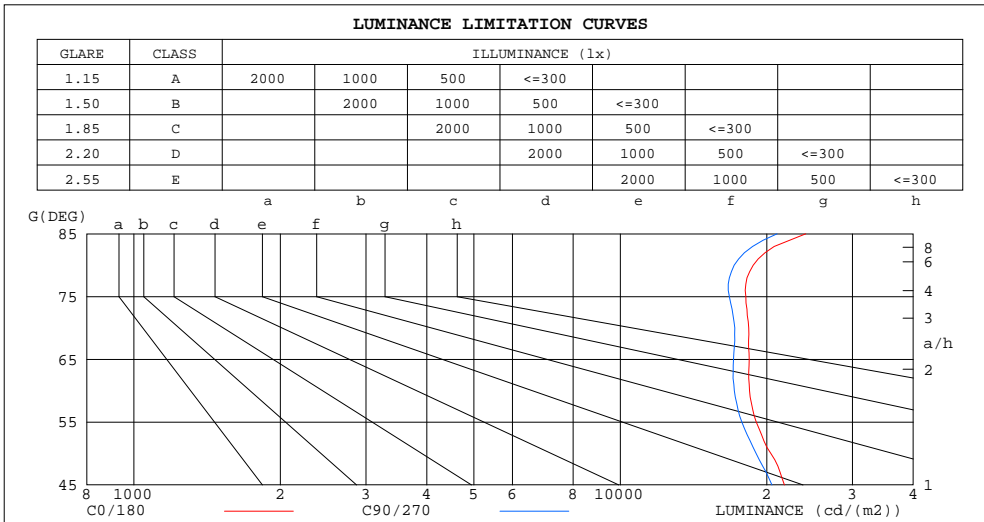
%lum = 77.7%
%lamp = 77.7%

C Range: 0 - 360DEG
C Interval: 22.5DEG
Test Speed: HIGH
Temperature:25.2DEG
Operators:East
Test Date:2020-10-26

γ Range: 0 - 180DEG
γ Interval: 1.0DEG
Test System:EVERFINE GO-R5000_V2 SYSTEM V2.0.351
Humidity:43%
Test Distance:2.492m [K=1.0000]
Remarks:

LUMINANCE LIMITATION CURVES

Test:U:230.0V I:0.8866A P:199.4W PF:0.9779 Lamp Flux:26253.4x1 lm		
NAME:	TYPE:N/A	WEIGHT:N/A
SPEC.:N/A	DIM.: N/A	SERIAL No.:N/A
MFR.: ERS	SUR.:N/A	Shielding Angle:N/A



LUMINANCE cd/(m2)		
G (DEG)	C0/180	C90/270
85	24047	20997
80	18754	17133
75	18110	16753
70	18362	17189
65	18408	17086
60	18430	17154
55	19033	17773
50	20390	19012
45	21746	20498

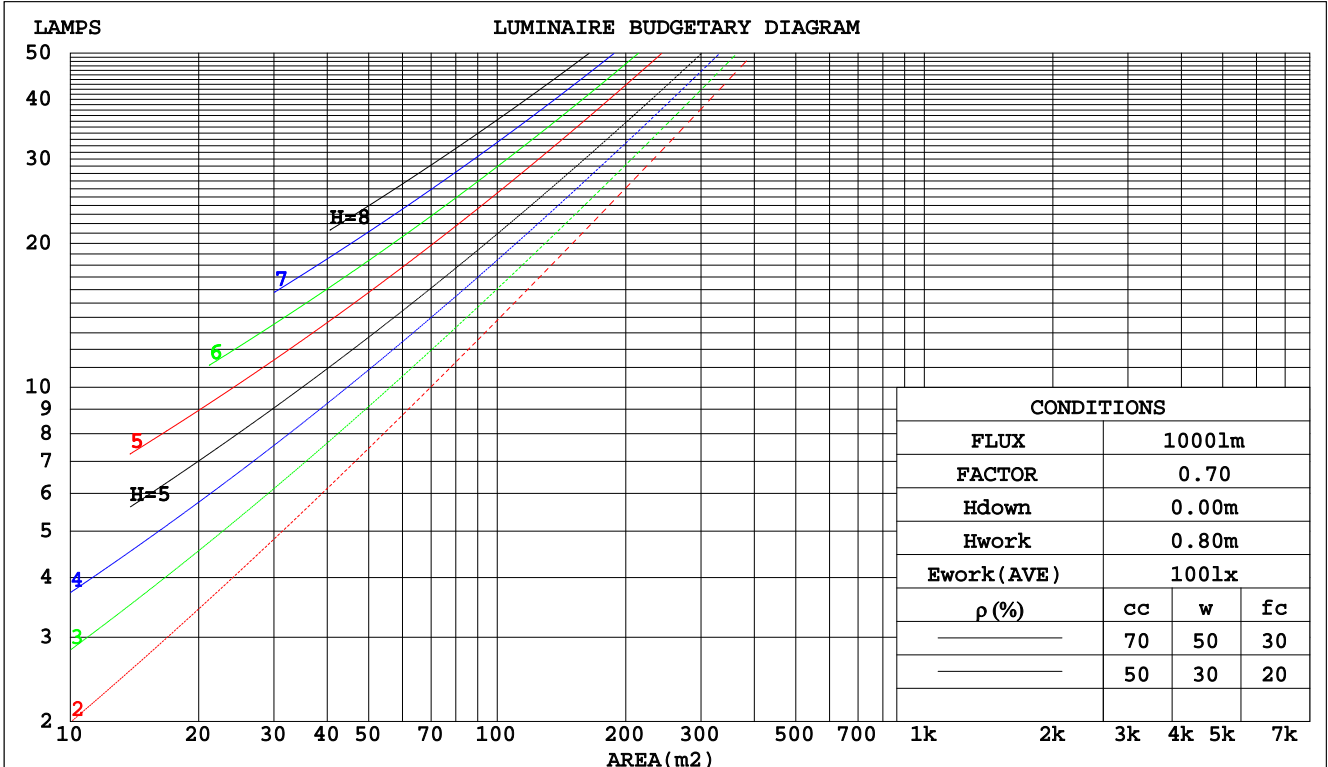
C Range: 0 - 360DEG
 C Interval: 22.5DEG
 Test Speed: HIGH
 Temperature: 25.2DEG
 Operators: East
 Test Date: 2020-10-26

γ Range: 0 - 180DEG
 γ Interval: 1.0DEG
 Test System: EVERFINE GO-R5000_V2 SYSTEM V2.0.351
 Humidity: 43%
 Test Distance: 2.492m [K=1.0000]
 Remarks:

CU AND LUMINAIRE BUDGETARY ESTIMATE DIAGRAM

Test:U:230.0V I:0.8866A P:199.4W PF:0.9779 Lamp Flux:26253.4x1 lm		
NAME:	TYPE:N/A	WEIGHT:N/A
SPEC.:N/A	DIM.: N/A	SERIAL No.:N/A
MFR.: ERS	SUR.:N/A	Shielding Angle:N/A

pcc	80%			70%			50%			30%			10%			0
	50%	30%	10%	50%	30%	10%	50%	30%	10%	50%	30%	10%	50%	30%	10%	0
pw																0
pfc	20%			20%			20%			20%			20%			0
RCR	RCR:Room Cavity Ratio Coefficients of Utilization(CU)															
0.0	1.19	1.19	1.19	1.16	1.16	1.16	1.11	1.11	1.11	1.06	1.06	1.06	1.01	1.01	1.01	.99
1.0	1.03	.99	.95	1.01	.97	.93	.96	.93	.90	.92	.89	.87	.88	.86	.84	.82
2.0	.90	.83	.77	.88	.82	.76	.84	.79	.74	.81	.76	.73	.78	.74	.71	.69
3.0	.79	.71	.65	.78	.70	.64	.75	.68	.63	.72	.66	.62	.69	.64	.60	.58
4.0	.71	.62	.55	.69	.61	.55	.67	.59	.54	.64	.58	.53	.62	.56	.52	.50
5.0	.63	.54	.48	.62	.54	.47	.60	.52	.47	.58	.51	.46	.56	.50	.46	.43
6.0	.57	.48	.42	.56	.48	.42	.54	.47	.41	.52	.46	.41	.51	.45	.40	.38
7.0	.52	.43	.37	.51	.43	.37	.49	.42	.37	.48	.41	.36	.46	.40	.36	.34
8.0	.47	.39	.33	.47	.39	.33	.45	.38	.33	.44	.37	.33	.43	.37	.32	.30
9.0	.44	.36	.30	.43	.35	.30	.42	.35	.30	.41	.34	.29	.40	.34	.29	.27
10.0	.40	.33	.27	.40	.32	.27	.39	.32	.27	.38	.31	.27	.37	.31	.27	.25



C Range: 0 - 360DEG
 C Interval: 22.5DEG
 Test Speed: HIGH
 Temperature:25.2DEG
 Operators:East
 Test Date:2020-10-26

γ Range: 0 - 180DEG
 γ Interval: 1.0DEG
 Test System:EVERFINE GO-R5000_V2 SYSTEM V2.0.351
 Humidity:43%
 Test Distance:2.492m [K=1.0000]
 Remarks:

WEC AND CCEC

Test:U:230.0V I:0.8866A P:199.4W PF:0.9779 Lamp Flux:26253.4x1 lm									
NAME:					TYPE:N/A			WEIGHT:N/A	
SPEC.:N/A					DIM.: N/A			SERIAL No.:N/A	
MFR.: ERS					SUR.:N/A			Shielding Angle:N/A	

ρcc	80%			70%			50%			30%			10%			0
ρw	50%	30%	10%	50%	30%	10%	50%	30%	10%	50%	30%	10%	50%	30%	10%	0
ρfc	20%			20%			20%			20%			20%			0
RCR	RCR:Room Cavity Ratio						Wall Exitance Coefficients(WEC)									
0.0																
1.0	.319	.181	.057	.312	.178	.056	.298	.171	.055	.285	.164	.053	.273	.158	.051	
2.0	.293	.160	.049	.286	.158	.049	.274	.152	.047	.263	.147	.046	.252	.143	.045	
3.0	.268	.143	.043	.262	.141	.042	.252	.136	.041	.242	.132	.041	.232	.129	.040	
4.0	.246	.128	.038	.241	.126	.037	.232	.123	.037	.223	.120	.036	.214	.116	.035	
5.0	.227	.116	.034	.223	.114	.033	.214	.112	.033	.206	.109	.032	.199	.106	.032	
6.0	.211	.106	.030	.207	.104	.030	.199	.102	.030	.192	.100	.029	.185	.097	.029	
7.0	.196	.097	.027	.192	.096	.027	.186	.094	.027	.179	.092	.027	.173	.090	.026	
8.0	.183	.089	.025	.180	.089	.025	.174	.087	.025	.168	.085	.025	.163	.083	.024	
9.0	.172	.083	.023	.169	.082	.023	.163	.081	.023	.158	.079	.023	.153	.078	.022	
10.0	.161	.077	.021	.159	.077	.021	.154	.075	.021	.149	.074	.021	.145	.073	.021	

ρcc	80%			70%			50%			30%			10%			0
ρw	50%	30%	10%	50%	30%	10%	50%	30%	10%	50%	30%	10%	50%	30%	10%	0
ρfc	20%			20%			20%			20%			20%			0
RCR	RCR:Room Cavity Ratio						Ceiling Cavity Exitance Coefficients(CCEC)									
0.0	.199	.199	.199	.170	.170	.170	.116	.116	.116	.067	.067	.067	.021	.021	.021	
1.0	.189	.164	.142	.162	.141	.122	.111	.097	.085	.064	.056	.049	.020	.018	.016	
2.0	.181	.140	.106	.155	.121	.092	.106	.084	.064	.061	.049	.038	.020	.016	.012	
3.0	.173	.123	.083	.148	.106	.072	.102	.074	.051	.059	.043	.030	.019	.014	.010	
4.0	.165	.110	.067	.141	.095	.058	.097	.066	.041	.056	.039	.024	.018	.013	.008	
5.0	.157	.099	.056	.135	.086	.049	.093	.060	.035	.054	.035	.020	.017	.011	.007	
6.0	.150	.091	.048	.129	.079	.042	.089	.055	.030	.052	.032	.018	.017	.011	.006	
7.0	.143	.084	.042	.123	.073	.037	.085	.051	.026	.049	.030	.016	.016	.010	.005	
8.0	.137	.078	.038	.118	.068	.033	.081	.047	.023	.047	.028	.014	.015	.009	.005	
9.0	.131	.073	.034	.112	.063	.030	.078	.045	.021	.045	.026	.013	.015	.009	.004	
10.0	.125	.069	.031	.108	.060	.027	.075	.042	.019	.044	.025	.012	.014	.008	.004	

C Range: 0 - 360DEG
 C Interval: 22.5DEG
 Test Speed: HIGH
 Temperature:25.2DEG
 Operators:East
 Test Date:2020-10-26

γ Range: 0 - 180DEG
 γ Interval: 1.0DEG
 Test System:EVERFINE GO-R5000_V2 SYSTEM V2.0.351
 Humidity:43%
 Test Distance:2.492m [K=1.0000]
 Remarks:

UGR(Unified Glare Rating) Table

Test:U:230.0V I:0.8866A P:199.4W PF:0.9779 Lamp Flux:26253.4x1 lm										
NAME:					TYPE:N/A			WEIGHT:N/A		
SPEC.:N/A					DIM.: N/A			SERIAL No.:N/A		
MFR.: ERS					SUR.:N/A			Shielding Angle:N/A		
ceiling/cavity	0.7	0.7	0.5	0.5	0.3	0.7	0.7	0.5	0.5	0.3
walls	0.5	0.3	0.5	0.3	0.3	0.5	0.3	0.5	0.3	0.3
working plane	0.2	0.2	0.2	0.2	0.2	0.2	0.2	0.2	0.2	0.2
Room dimensions	Viewed crosswise					Viewed endwise				
x = 2H y = 2H	22.8	24.3	23.1	24.5	24.8	22.5	24.0	22.8	24.2	24.5
3H	24.4	25.8	24.8	26.1	26.3	24.1	25.5	24.4	25.7	26.0
4H	25.2	26.5	25.5	26.7	27.0	24.8	26.1	25.2	26.4	26.7
6H	25.8	27.0	26.2	27.3	27.6	25.4	26.7	25.8	27.0	27.3
8H	26.1	27.3	26.5	27.6	27.9	25.7	26.9	26.1	27.2	27.5
12H	26.4	27.5	26.8	27.8	28.2	26.0	27.1	26.3	27.4	27.8
4H 2H	23.4	24.7	23.7	24.9	25.2	23.1	24.4	23.5	24.7	25.0
3H	25.2	26.3	25.5	26.6	27.0	24.9	26.1	25.3	26.4	26.7
4H	26.1	27.1	26.5	27.5	27.8	25.8	26.8	26.2	27.2	27.5
6H	26.9	27.8	27.3	28.2	28.6	26.6	27.5	27.0	27.9	28.3
8H	27.3	28.1	27.7	28.5	28.9	26.9	27.8	27.4	28.2	28.6
12H	27.6	28.5	28.1	28.9	29.3	27.3	28.1	27.7	28.5	28.9
8H 4H	26.4	27.2	26.8	27.6	28.0	26.1	27.0	26.6	27.4	27.8
6H	27.4	28.1	27.9	28.6	29.0	27.1	27.9	27.6	28.3	28.7
8H	27.9	28.6	28.4	29.0	29.5	27.6	28.3	28.1	28.7	29.2
12H	28.5	29.0	29.0	29.5	30.0	28.1	28.7	28.6	29.2	29.7
12H 4H	26.4	27.2	26.9	27.6	28.0	26.2	27.0	26.6	27.4	27.8
6H	27.5	28.2	28.0	28.6	29.1	27.3	27.9	27.7	28.4	28.8
8H	28.1	28.7	28.6	29.1	29.6	27.8	28.4	28.3	28.9	29.4
Variations with the observer position at spacings:										
S = 1.0H	+ 0.2 / - 0.2					+ 0.2 / - 0.2				
1.5H	+ 0.1 / - 0.2					+ 0.1 / - 0.3				
2.0H	+ 0.2 / - 0.2					+ 0.1 / - 0.2				

CIE Pub.117 Corrected 26253 lm Total Lamp Luminous Flux. (8log(F/F0) = 11.4)

C Range: 0 - 360DEG
 C Interval: 22.5DEG
 Test Speed: HIGH
 Temperature:25.2DEG
 Operators:East
 Test Date:2020-10-26

γ Range: 0 - 180DEG
 γ Interval: 1.0DEG
 Test System:EVERFINE GO-R5000_V2 SYSTEM V2.0.351
 Humidity:43%
 Test Distance:2.492m [K=1.0000]
 Remarks:

UTILIZATION FACTORS TABLE

Test:U:230.0V I:0.8866A P:199.4W PF:0.9779 Lamp Flux:26253.4x1 lm		
NAME:	TYPE:N/A	WEIGHT:N/A
SPEC.:N/A	DIM.: N/A	SERIAL No.:N/A
MFR.: ERS	SUR.:N/A	Shielding Angle:N/A

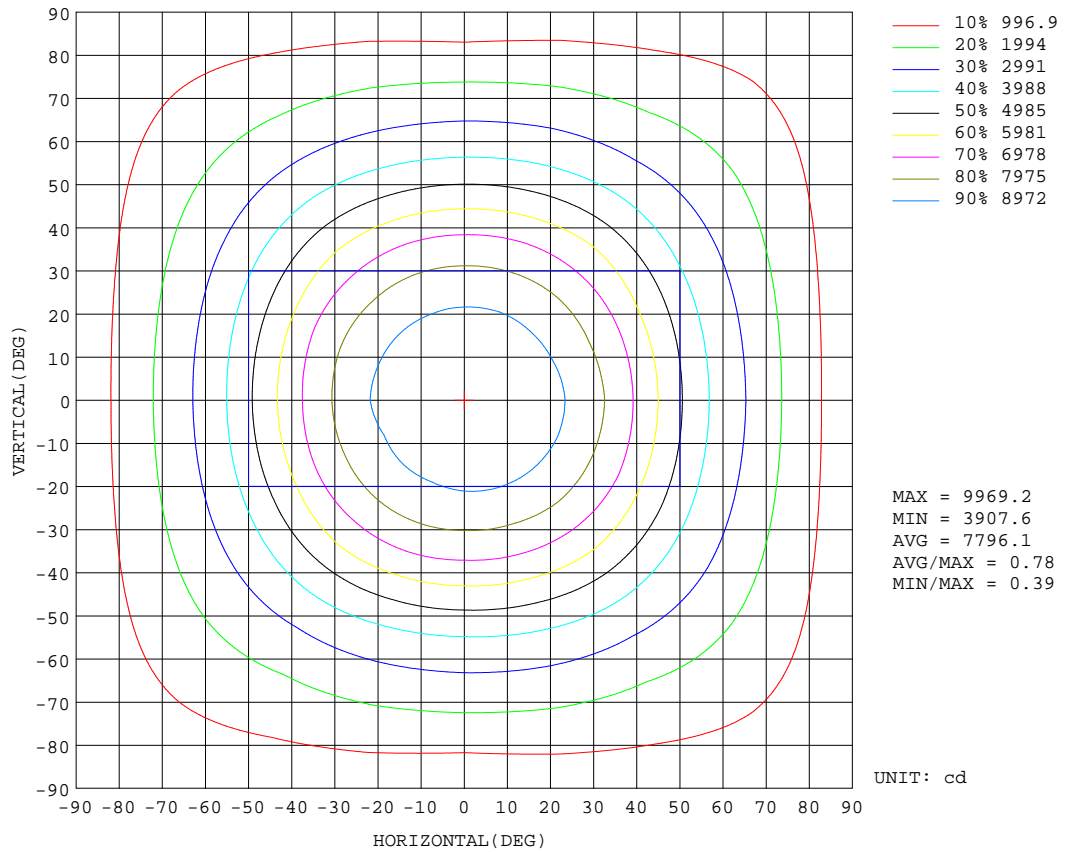
REFLECTANCE										
Ceiling	0.8	0.8	0.8	0.7	0.7	0.7	0.5	0.5	0.5	0
Walls	0.7	0.5	0.3	0.7	0.5	0.3	0.7	0.5	0.3	0
Working plane	0.2	0.2	0.2	0.2	0.2	0.2	0.2	0.2	0.2	0
ROOM INDEX	UTILIZATION FACTORS(PERCENT) $k(RI) \times RCR = 5$									
k = 0.60	59	47	41	58	47	40	57	47	40	34
0.80	68	57	50	67	57	50	66	56	49	43
1.00	77	66	58	75	65	58	73	66	58	51
1.25	83	73	66	82	72	65	79	71	65	57
1.50	88	78	71	86	77	71	83	76	70	62
2.00	95	86	80	93	85	79	89	83	77	69
2.50	98	91	84	96	89	83	92	86	82	73
3.00	102	95	89	99	93	88	95	90	86	77
4.00	106	100	95	103	98	93	99	94	91	82
5.00	108	103	99	105	101	97	101	97	94	84
ROOM INDEX	UF(total)									Direct
According to DIN EN 13032-2 2004			Suspended				SHRNOM = 1.25			

C Range: 0 - 360DEG
 C Interval: 22.5DEG
 Test Speed: HIGH
 Temperature:25.2DEG
 Operators:East
 Test Date:2020-10-26

γ Range: 0 - 180DEG
 γ Interval: 1.0DEG
 Test System:EVERFINE GO-R5000_V2 SYSTEM V2.0.351
 Humidity:43%
 Test Distance:2.492m [K=1.0000]
 Remarks:

ISOCANDELA DIAGRAM

Test:U:230.0V I:0.8866A P:199.4W PF:0.9779 Lamp Flux:26253.4x1 lm		
NAME:	TYPE:N/A	WEIGHT:N/A
SPEC.:N/A	DIM.: N/A	SERIAL No.:N/A
MFR.: ERS	SUR.:N/A	Shielding Angle:N/A

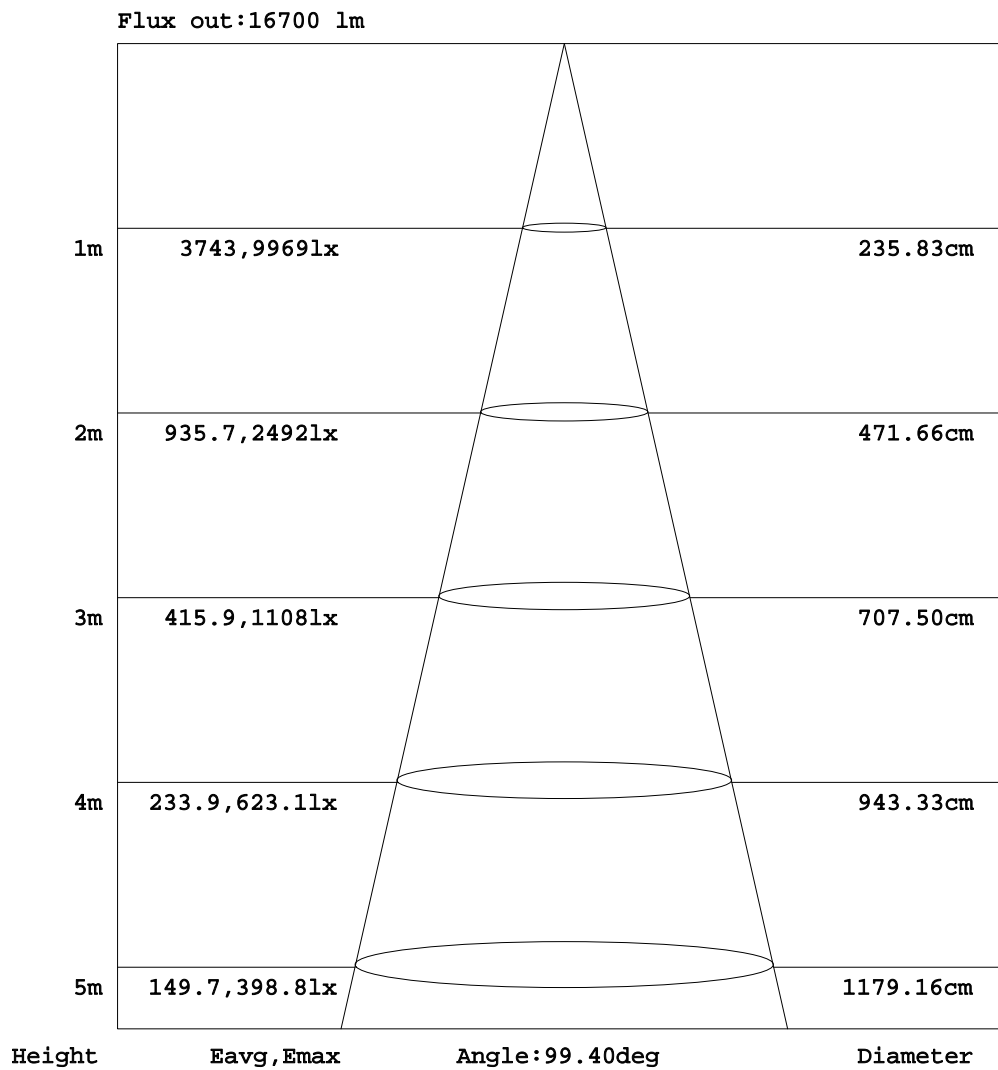


C Range: 0 - 360DEG
 C Interval: 22.5DEG
 Test Speed: HIGH
 Temperature:25.2DEG
 Operators:East
 Test Date:2020-10-26

γ Range: 0 - 180DEG
 γ Interval: 1.0DEG
 Test System:EVERFINE GO-R5000_V2 SYSTEM V2.0.351
 Humidity:43%
 Test Distance:2.492m [K=1.0000]
 Remarks:

AAI Figure

Test:U:230.0V I:0.8866A P:199.4W PF:0.9779 Lamp Flux:26253.4x1 lm		
NAME:	TYPE:N/A	WEIGHT:N/A
SPEC.:N/A	DIM.: N/A	SERIAL No.:N/A
MFR.: ERS	SUR.:N/A	Shielding Angle:N/A



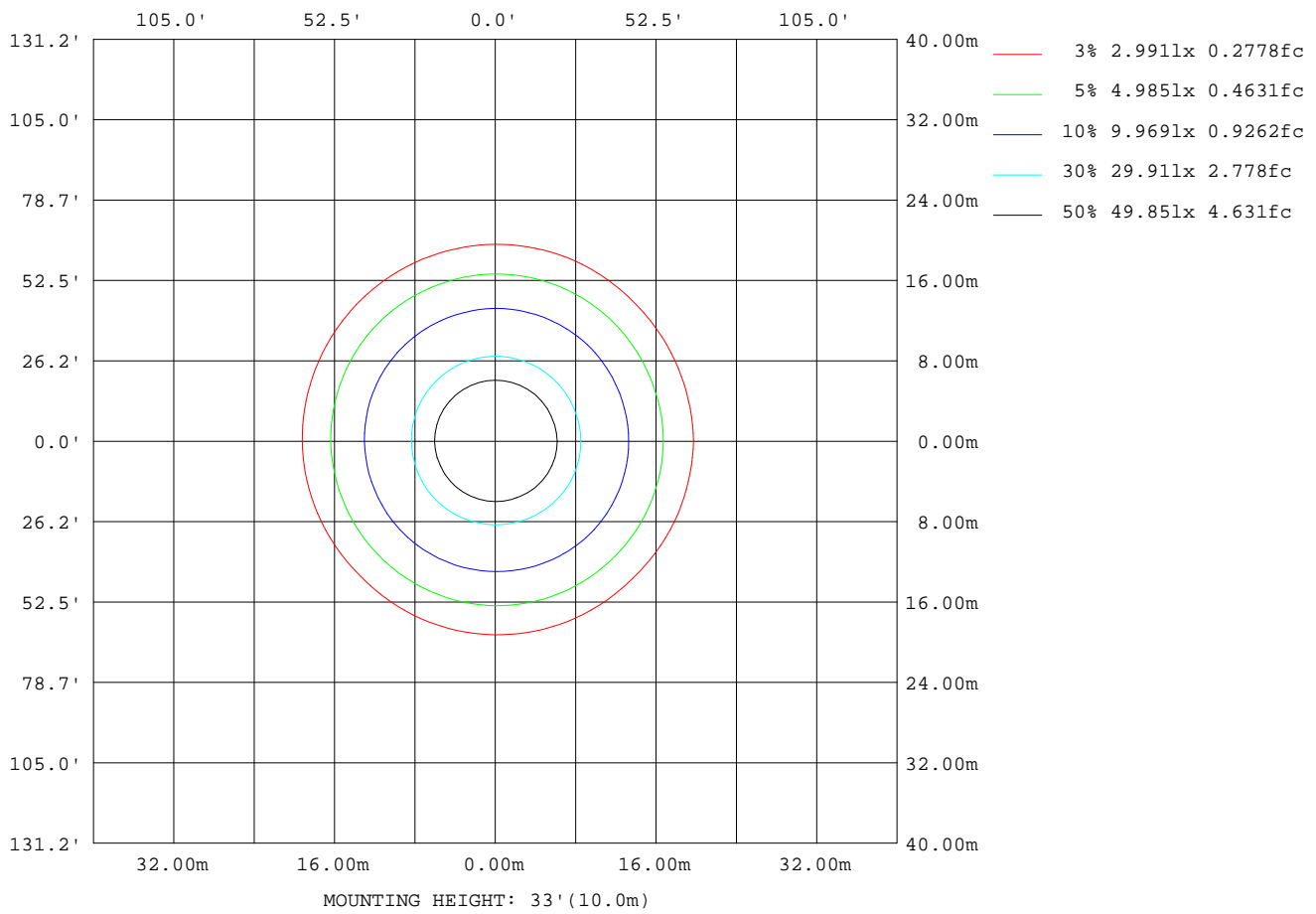
Note:The Curves indicate the illuminated area and the average illumination when the luminaire is at different distance.

C Range: 0 - 360DEG
 C Interval: 22.5DEG
 Test Speed: HIGH
 Temperature:25.2DEG
 Operators:East
 Test Date:2020-10-26

γ Range: 0 - 180DEG
 γ Interval: 1.0DEG
 Test System:EVERFINE GO-R5000_V2 SYSTEM V2.0.351
 Humidity:43%
 Test Distance:2.492m [K=1.0000]
 Remarks:

ISOLUX DIAGRAM

Test:U:230.0V I:0.8866A P:199.4W PF:0.9779 Lamp Flux:26253.4x1 lm		
NAME:	TYPE:N/A	WEIGHT:N/A
SPEC.:N/A	DIM.: N/A	SERIAL No.:N/A
MFR.: ERS	SUR.:N/A	Shielding Angle:N/A



C Range: 0 - 360DEG
 C Interval: 22.5DEG
 Test Speed: HIGH
 Temperature:25.2DEG
 Operators:East
 Test Date:2020-10-26

γ Range: 0 - 180DEG
 γ Interval: 1.0DEG
 Test System:EVERFINE GO-R5000_V2 SYSTEM V2.0.351
 Humidity:43%
 Test Distance:2.492m [K=1.0000]
 Remarks:

LED Avg.L Report

Test:U:230.0V I:0.8866A P:199.4W PF:0.9779 Lamp Flux:26253.4x1 lm		
NAME:	TYPE:N/A	WEIGHT:N/A
SPEC.:N/A	DIM.: N/A	SERIAL No.:N/A
MFR.: ERS	SUR.:N/A	Shielding Angle:N/A

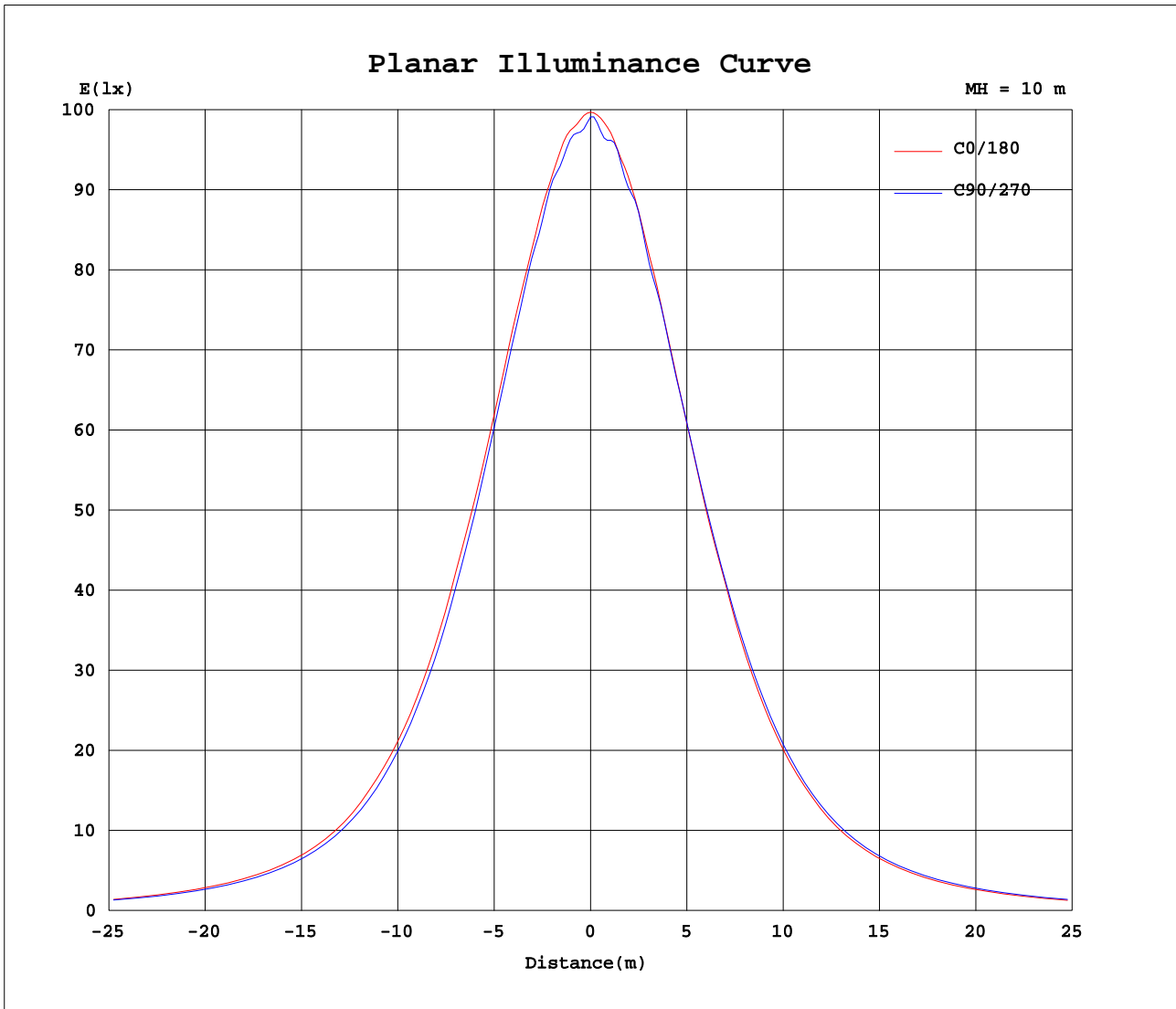
AvgL	cd/m2
L_0~180(65)av	17558
L_0~180(75)av	17187
L_0~180(85)av	22947
L_90~270(65)av	17578
L_90~270(75)av	17556
L_90~270(85)av	22747
L_45(65)av	16998
L_45(75)av	16910
L_45(85)av	24062

Standard: GB/T 29293-2012

C Range: 0 - 360DEG
 C Interval: 22.5DEG
 Test Speed: HIGH
 Temperature:25.2DEG
 Operators:East
 Test Date:2020-10-26

γ Range: 0 - 180DEG
 γ Interval: 1.0DEG
 Test System:EVERFINE GO-R5000_V2 SYSTEM V2.0.351
 Humidity:43%
 Test Distance:2.492m [K=1.0000]
 Remarks:

Planar Illuminance Curve



C Range: 0 - 360DEG
 C Interval: 22.5DEG
 Test Speed: HIGH
 Temperature: 25.2DEG
 Operators: East
 Test Date: 2020-10-26

γ Range: 0 - 180DEG
 γ Interval: 1.0DEG
 Test System: EVERFINE GO-R5000_V2 SYSTEM V2.0.351
 Humidity: 43%
 Test Distance: 2.492m [K=1.0000]
 Remarks:

LUMINOUS DISTRIBUTION INTENSITY DATA

Test:U:230.0V I:0.8866A P:199.4W PF:0.9779 Lamp Flux:26253.4x1 lm		
NAME:	TYPE:N/A	WEIGHT:N/A
SPEC.:N/A	DIM.: N/A	SERIAL No.:N/A
MFR.: ERS	SUR.:N/A	Shielding Angle:N/A

Table--1

UNIT: cd

C(DEG) γ (DEG)	0	22.5	45	67.5	90	112.5	135	157.5	180	202.5	225	247.5	270	292.5	315	337.5			
0	9916	9916	9916	9916	9916	9916	9916	9916	9916	9916	9916	9916	9916	9916	9916	9916			
5	9838	9726	9731	9785	9805	9789	9734	9738	9841	9808	9712	9725	9734	9701	9692	9806			
10	9731	9682	9677	9605	9651	9606	9601	9547	9673	9514	9686	9620	9602	9614	9761	9615			
15	9516	9490	9491	9401	9379	9377	9395	9391	9442	9414	9330	9497	9462	9534	9400	9458			
20	9194	9121	9102	9131	9061	9022	9041	9035	9094	9081	9112	9042	9127	9113	9204	9190			
25	8759	8780	8709	8661	8605	8589	8608	8598	8615	8581	8613	8606	8660	8684	8713	8757			
30	8219	8216	8175	8059	8012	8020	8033	8048	8025	8074	8073	8114	8120	8163	8224	8219			
35	7632	7579	7487	7384	7333	7327	7348	7368	7389	7386	7434	7462	7489	7536	7565	7611			
40	6795	6815	6711	6582	6510	6511	6545	6541	6523	6594	6659	6706	6722	6779	6816	6821			
45	5947	5907	5898	5730	5639	5631	5703	5643	5657	5703	5851	5846	5874	5931	6040	5943			
50	5069	5060	4983	4846	4755	4732	4751	4789	4796	4869	4957	4966	5003	5045	5110	5114			
55	4222	4205	4149	4048	3966	3937	3955	3951	3977	4051	4128	4156	4178	4239	4271	4250			
60	3564	3499	3418	3384	3337	3287	3239	3281	3308	3374	3443	3472	3518	3545	3547	3556			
65	3009	2921	2782	2823	2809	2740	2634	2720	2762	2780	2841	2914	2968	2979	2916	2978			
70	2429	2363	2212	2292	2287	2220	2075	2180	2224	2243	2284	2400	2442	2446	2349	2433			
75	1813	1777	1681	1731	1687	1680	1563	1632	1646	1702	1749	1847	1847	1884	1814	1871			
80	1259	1277	1226	1235	1158	1203	1133	1168	1148	1224	1268	1319	1276	1352	1326	1352			
85	811	835	805	793	712	764	733	770	745	815	841	891	830	907	882	893			
90	458	457	449	430	397	404	392	362	371	424	467	488	450	496	501	497			
95	80.3	87.7	152	221	235	196	129	63.3	84.7	38.0	145	243	259	248	152	0.65			
100	185	129	52.7	89.8	111	76.5	42.4	121	163	128	49.6	83.3	112	82.6	54.1	140			
105	102	63.6	7.33	14.7	21.2	4.94	7.75	51.0	79.8	56.3	3.49	2.13	16.5	2.14	13.8	70.3			
110	32.5	11.6	3.52	3.42	3.38	3.41	3.55	6.06	22.4	3.53	6.04	2.50	2.45	2.46	3.78	13.8			
115	4.08	4.02	3.81	3.74	3.64	3.72	3.84	4.08	3.12	3.01	2.92	4.75	3.36	3.60	2.78	2.89			
120	4.49	4.41	4.26	4.26	4.10	4.22	4.39	4.42	3.49	3.23	3.18	7.71	15.7	3.17	3.05	3.07			
125	5.07	4.98	5.04	5.05	4.89	4.96	5.07	5.17	3.93	3.52	3.55	3.51	3.47	3.58	3.41	3.34			
130	6.10	6.11	6.17	6.23	6.02	6.10	6.16	6.16	4.27	3.99	3.93	3.95	3.76	4.06	3.83	3.77			
135	7.37	7.45	7.59	7.62	7.51	7.60	7.39	7.28	4.71	4.42	4.37	4.43	4.31	4.46	4.45	4.30			
140	9.08	9.34	9.61	9.50	9.61	9.60	9.30	9.00	5.17	4.72	4.87	4.93	4.84	4.89	4.92	4.82			
145	11.2	11.5	12.1	12.0	12.1	12.0	11.7	11.0	5.60	5.20	5.50	5.61	5.56	5.56	5.53	5.61			
150	12.7	13.2	13.8	14.0	13.8	13.8	13.4	12.7	6.09	5.76	6.07	5.97	5.98	6.04	6.16	6.20			
155	14.4	14.9	15.0	15.1	15.2	15.1	14.7	14.4	6.78	6.51	6.82	6.82	6.69	6.86	6.85	7.15			
160	15.1	15.2	15.2	15.6	15.4	15.6	15.2	14.6	7.83	7.65	7.54	7.29	7.30	7.33	7.32	7.97			
165	14.3	14.6	14.6	14.5	14.6	15.0	14.6	14.3	8.58	8.47	8.15	7.83	7.52	7.67	7.70	8.60			
170	13.7	13.6	13.4	13.1	13.4	13.4	13.6	13.6	9.33	9.32	8.73	8.48	8.14	8.20	8.22	9.10			
175	12.9	12.7	12.5	12.2	11.8	12.4	12.6	12.9	10.5	10.5	10.1	9.66	9.41	9.21	9.59	10.2			
180	11.6	11.1	11.1	10.5	10.6	10.8	11.5	11.5	11.7	11.7	11.2	11.2	10.6	10.7	10.8	11.5			

C Range: 0 - 360DEG
 C Interval: 22.5DEG
 Test Speed: HIGH
 Temperature:25.2DEG
 Operators:East
 Test Date:2020-10-26

γ Range: 0 - 180DEG
 γ Interval: 1.0DEG
 Test System:EVERFINE GO-R5000_V2 SYSTEM V2.0.351
 Humidity:43%
 Test Distance:2.492m [K=1.0000]
 Remarks: