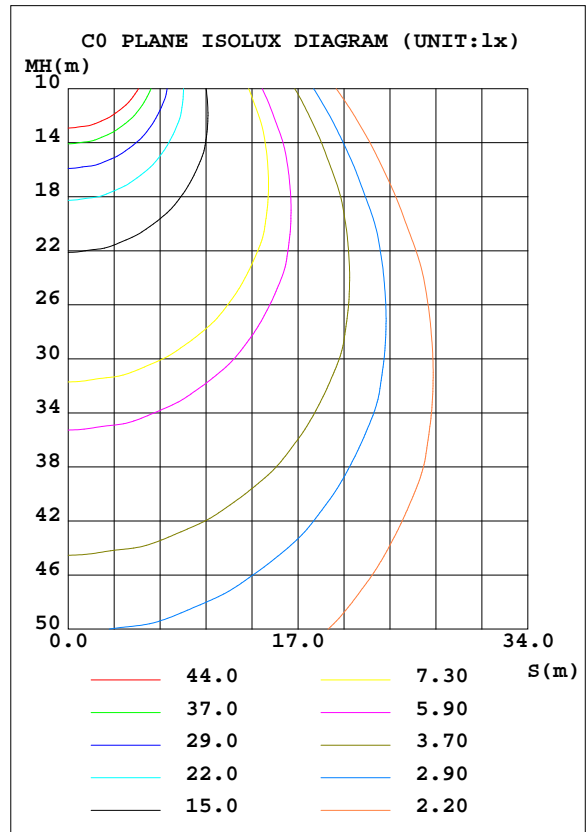
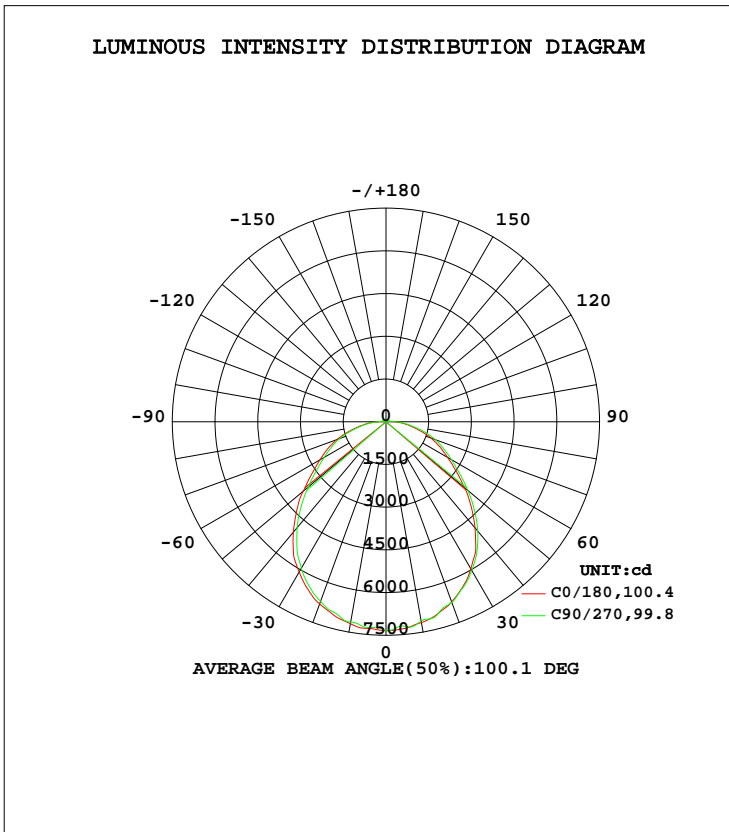


LUMINAIRE PHOTOMETRIC TEST REPORT

Test:U:230.1V I:0.6627A P:148.5W PF:0.9738 Lamp Flux:19647x1 lm		
NAME: LED CANOPY LIGHT	TYPE:N/A	WEIGHT:N/A
SPEC.:N/A	DIM.: N/A	SERIAL No.:N/A
MFR.: ERS	SUR.:N/A	Shielding Angle:N/A

DATA OF LAMP		PHOTOMETRIC DATA Eff: 132.30 lm/W			
MODEL	ERS-C150-B	I _{max} (cd)	7349	S/MH(C0/180)	1.21
NOMINAL POWER(W)	150	LOR(%)	100.0	S/MH(C90/270)	1.23
RATED VOLTAGE(V)	230	TOTAL FLUX(lm)	19647	η UP, DN(C0-180)	0.6,49.0
NOMINAL FLUX(lm)	19647	CIE CLASS	DIRECT	η UP, DN(C180-360)	0.6,49.9
LAMPS INSIDE	1	η up(%)	1.2	CIBSE SHR NOM	1.25
TEST VOLTAGE(V)	230	η down(%)	98.8	CIBSE SHR MAX	1.35



C Range: 0 - 360DEG
 C Interval: 22.5DEG
 Test Speed: HIGH
 Temperature:25.2DEG
 Operators:East
 Test Date:2020-10-26

γ Range: 0 - 180DEG
 γ Interval: 1.0DEG
 Test System:EVERFINE GO-R5000_V2 SYSTEM V2.0.351
 Humidity:43%
 Test Distance:2.492m [K=1.0000]
 Remarks:

ZONAL FLUX DIAGRAM

ZONAL FLUX DIAGRAM:

γ	C0	C45	C90	C135	C180	C225	C270	C315	γ	Φ zone	Φ total	%lum, lamp
10	7199	7164	7142	7102	7160	7172	7104	7228	0- 10	687.7	687.7	3.5,3.5
20	6808	6747	6712	6697	6736	6753	6760	6821	10- 20	1969	2657	13.5,13.5
30	6096	6069	5947	5962	5960	5994	6029	6106	20- 30	2956	5613	28.6,28.6
40	5057	4999	4855	4878	4866	4963	5011	5080	30- 40	3457	9070	46.2,46.2
50	3796	3734	3567	3558	3605	3718	3751	3832	40- 50	3345	12416	63.2,63.2
60	2677	2577	2511	2439	2492	2593	2649	2673	50- 60	2774	15189	77.3,77.3
70	1835	1677	1732	1572	1688	1730	1848	1781	60- 70	2130	17320	88.2,88.2
80	960.6	934.3	886.6	863.8	879.3	968.2	976.1	1014	70- 80	1408	18728	95.3,95.3
90	353.2	351.2	304.8	307.0	309.0	368.6	353.1	392.3	80- 90	690.7	19419	98.8,98.8
100	142.4	44.54	87.46	36.41	127.0	42.63	91.04	45.09	90-100	172.4	19591	99.7,99.7
110	27.75	2.651	2.546	2.675	18.99	3.966	1.848	2.534	100-110	35.02	19626	99.9,99.9
120	3.376	3.189	3.080	3.290	2.647	2.395	10.63	2.291	110-120	3.411	19630	99.9,99.9
130	4.574	4.614	4.504	4.617	3.197	2.948	2.818	2.860	120-130	3.041	19633	99.9,99.9
140	6.791	7.176	7.211	6.966	3.860	3.645	3.611	3.676	130-140	3.457	19636	99.9,99.9
150	9.494	10.34	10.34	10.01	4.548	4.534	4.471	4.589	140-150	3.989	19640	100,100
160	11.22	11.36	11.46	11.32	5.830	5.612	5.458	5.449	150-160	3.689	19644	100,100
170	10.16	9.984	9.971	10.12	6.932	6.491	6.065	6.100	160-170	2.382	19646	100,100
180	8.611	8.225	7.628	8.369	8.628	8.289	7.823	8.013	170-180	0.7854	19647	100,100
DEG	LUMINOUS INTENSITY:cd									UNIT:lm		

Conical surface Flux(90deg): 10793 lm

%lum = 54.9%
%lamp = 54.9%

Conical surface Flux(120deg): 15189 lm

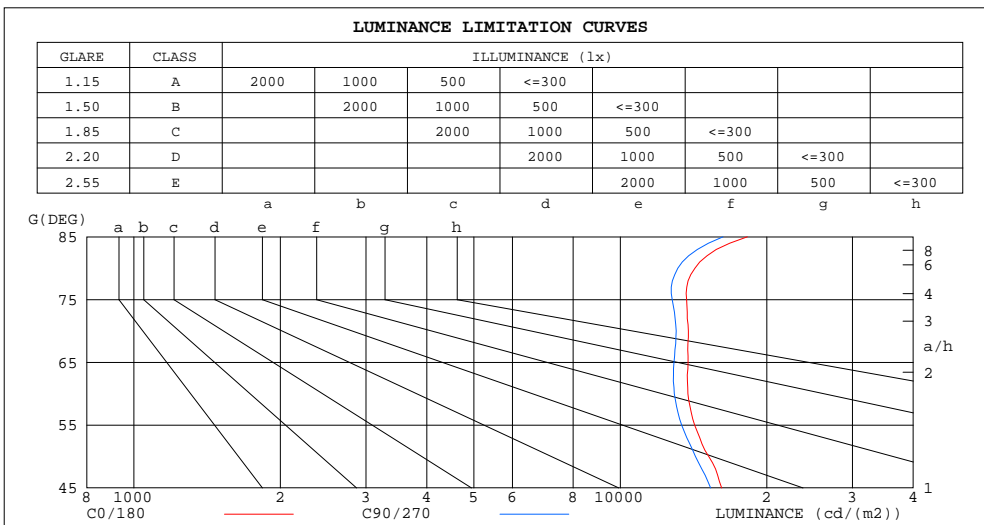
%lum = 77.3%
%lamp = 77.3%

C Range: 0 - 360DEG
C Interval: 22.5DEG
Test Speed: HIGH
Temperature:25.2DEG
Operators:East
Test Date:2020-10-26

γ Range: 0 - 180DEG
γ Interval: 1.0DEG
Test System:EVERFINE GO-R5000_V2 SYSTEM V2.0.351
Humidity:43%
Test Distance:2.492m [K=1.0000]
Remarks:

LUMINANCE LIMITATION CURVES

Test:U:230.1V I:0.6627A P:148.5W PF:0.9738 Lamp Flux:19647x1 lm		
NAME:	TYPE:N/A	WEIGHT:N/A
SPEC.:N/A	DIM.: N/A	SERIAL No.:N/A
MFR.: ERS	SUR.:N/A	Shielding Angle:N/A



LUMINANCE cd/(m2)		
G (DEG)	C0/180	C90/270
85	18240	16254
80	14232	13129
75	13683	12785
70	13801	13025
65	13784	12886
60	13772	12914
55	14213	13371
50	15194	14268
45	16159	15339

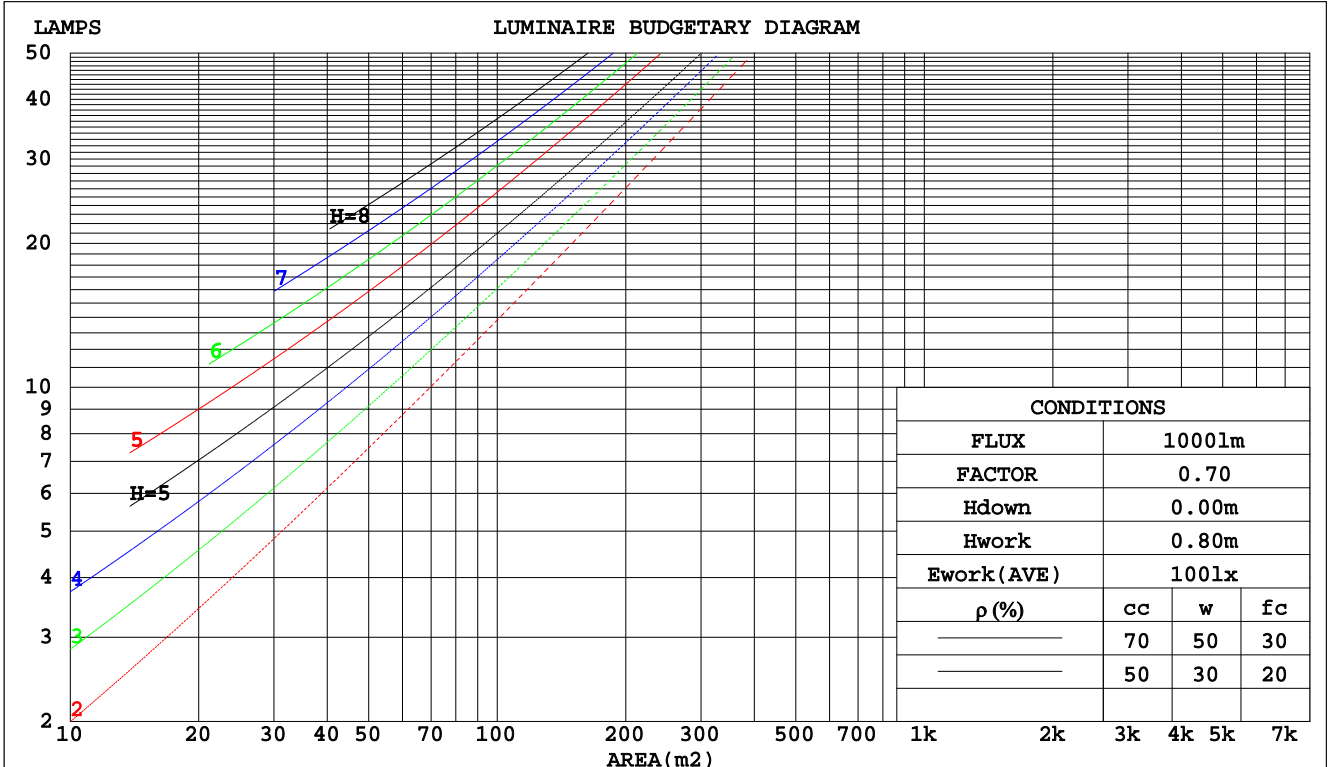
C Range: 0 - 360DEG
 C Interval: 22.5DEG
 Test Speed: HIGH
 Temperature: 25.2DEG
 Operators: East
 Test Date: 2020-10-26

γ Range: 0 - 180DEG
 γ Interval: 1.0DEG
 Test System: EVERFINE GO-R5000_V2 SYSTEM V2.0.351
 Humidity: 43%
 Test Distance: 2.492m [K=1.0000]
 Remarks:

CU AND LUMINAIRE BUDGETARY ESTIMATE DIAGRAM

Test:U:230.1V I:0.6627A P:148.5W PF:0.9738 Lamp Flux:19647x1 lm		
NAME:	TYPE:N/A	WEIGHT:N/A
SPEC.:N/A	DIM.: N/A	SERIAL No.:N/A
MFR.: ERS	SUR.:N/A	Shielding Angle:N/A

pcc	80%			70%			50%			30%			10%			0
pw	50%	30%	10%	50%	30%	10%	50%	30%	10%	50%	30%	10%	50%	30%	10%	0
pfc	20%			20%			20%			20%			20%			0
RCR	RCR:Room Cavity Ratio															
	Coefficients of Utilization(CU)															
0.0	1.19	1.19	1.19	1.16	1.16	1.16	1.10	1.10	1.10	1.06	1.06	1.06	1.01	1.01	1.01	.99
1.0	1.03	.99	.95	1.01	.97	.93	.96	.93	.90	.92	.89	.87	.88	.86	.84	.82
2.0	.90	.83	.77	.88	.82	.76	.84	.79	.74	.81	.76	.72	.77	.74	.71	.68
3.0	.79	.71	.64	.78	.70	.64	.74	.68	.62	.71	.66	.61	.69	.64	.60	.58
4.0	.70	.62	.55	.69	.61	.54	.66	.59	.54	.64	.58	.53	.62	.56	.52	.50
5.0	.63	.54	.47	.62	.53	.47	.60	.52	.47	.58	.51	.46	.56	.50	.45	.43
6.0	.57	.48	.42	.56	.48	.41	.54	.47	.41	.52	.46	.40	.51	.45	.40	.38
7.0	.52	.43	.37	.51	.43	.37	.49	.42	.36	.48	.41	.36	.46	.40	.36	.34
8.0	.47	.39	.33	.47	.39	.33	.45	.38	.33	.44	.37	.32	.43	.37	.32	.30
9.0	.43	.35	.30	.43	.35	.30	.42	.34	.29	.40	.34	.29	.39	.33	.29	.27
10.0	.40	.32	.27	.40	.32	.27	.39	.32	.27	.38	.31	.27	.37	.31	.26	.25



C Range: 0 - 360DEG
 C Interval: 22.5DEG
 Test Speed: HIGH
 Temperature:25.2DEG
 Operators:East
 Test Date:2020-10-26

γ Range: 0 - 180DEG
 γ Interval: 1.0DEG
 Test System:EVERFINE GO-R5000_V2 SYSTEM V2.0.351
 Humidity:43%
 Test Distance:2.492m [K=1.0000]
 Remarks:

WEC AND CCEC

Test:U:230.1V I:0.6627A P:148.5W PF:0.9738 Lamp Flux:19647x1 lm		
NAME:	TYPE:N/A	WEIGHT:N/A
SPEC.:N/A	DIM.: N/A	SERIAL No.:N/A
MFR.: ERS	SUR.:N/A	Shielding Angle:N/A

ρcc	80%			70%			50%			30%			10%			0
ρw	50%	30%	10%	50%	30%	10%	50%	30%	10%	50%	30%	10%	50%	30%	10%	0
ρfc	20%			20%			20%			20%			20%			0
RCR	RCR:Room Cavity Ratio						Wall Exitance Coefficients(WEC)									
0.0																
1.0	.321	.183	.058	.314	.179	.057	.300	.172	.055	.287	.165	.053	.275	.159	.051	
2.0	.294	.161	.049	.288	.158	.049	.275	.153	.048	.264	.148	.046	.253	.143	.045	
3.0	.269	.143	.043	.264	.141	.042	.253	.137	.042	.243	.133	.041	.233	.129	.040	
4.0	.247	.129	.038	.242	.127	.037	.232	.123	.037	.224	.120	.036	.215	.117	.036	
5.0	.228	.116	.034	.223	.115	.033	.215	.112	.033	.207	.109	.032	.199	.107	.032	
6.0	.211	.106	.030	.207	.105	.030	.199	.102	.030	.192	.100	.029	.186	.098	.029	
7.0	.196	.097	.028	.193	.096	.027	.186	.094	.027	.180	.092	.027	.174	.090	.026	
8.0	.184	.090	.025	.180	.089	.025	.174	.087	.025	.168	.085	.025	.163	.084	.024	
9.0	.172	.083	.023	.169	.082	.023	.164	.081	.023	.158	.079	.023	.153	.078	.023	
10.0	.162	.078	.022	.159	.077	.021	.154	.076	.021	.149	.074	.021	.145	.073	.021	

ρcc	80%			70%			50%			30%			10%			0
ρw	50%	30%	10%	50%	30%	10%	50%	30%	10%	50%	30%	10%	50%	30%	10%	0
ρfc	20%			20%			20%			20%			20%			0
RCR	RCR:Room Cavity Ratio						Ceiling Cavity Exitance Coefficients(CCEC)									
0.0	.199	.199	.199	.170	.170	.170	.116	.116	.116	.067	.067	.067	.021	.021	.021	
1.0	.190	.165	.142	.163	.142	.123	.111	.097	.085	.064	.056	.049	.021	.018	.016	
2.0	.182	.141	.107	.155	.121	.092	.107	.084	.064	.061	.049	.038	.020	.016	.012	
3.0	.173	.123	.083	.149	.106	.072	.102	.074	.051	.059	.043	.030	.019	.014	.010	
4.0	.165	.110	.068	.142	.095	.059	.098	.066	.041	.056	.039	.024	.018	.013	.008	
5.0	.158	.100	.057	.136	.086	.049	.093	.060	.035	.054	.035	.021	.017	.012	.007	
6.0	.151	.091	.049	.129	.079	.042	.089	.055	.030	.052	.033	.018	.017	.011	.006	
7.0	.144	.084	.043	.124	.073	.037	.085	.051	.026	.050	.030	.016	.016	.010	.005	
8.0	.137	.078	.038	.118	.068	.033	.082	.048	.024	.048	.028	.014	.015	.009	.005	
9.0	.131	.074	.035	.113	.064	.030	.078	.045	.021	.046	.026	.013	.015	.009	.004	
10.0	.126	.069	.032	.108	.060	.028	.075	.042	.020	.044	.025	.012	.014	.008	.004	

C Range: 0 - 360DEG
 C Interval: 22.5DEG
 Test Speed: HIGH
 Temperature:25.2DEG
 Operators:East
 Test Date:2020-10-26

γ Range: 0 - 180DEG
 γ Interval: 1.0DEG
 Test System:EVERFINE GO-R5000_V2 SYSTEM V2.0.351
 Humidity:43%
 Test Distance:2.492m [K=1.0000]
 Remarks:

UGR(Unified Glare Rating) Table

Test:U:230.1V I:0.6627A P:148.5W PF:0.9738 Lamp Flux:19647x1 lm										
NAME:					TYPE:N/A			WEIGHT:N/A		
SPEC.:N/A					DIM.: N/A			SERIAL No.:N/A		
MFR.: ERS					SUR.:N/A			Shielding Angle:N/A		
ceiling/cavity	0.7	0.7	0.5	0.5	0.3	0.7	0.7	0.5	0.5	0.3
walls	0.5	0.3	0.5	0.3	0.3	0.5	0.3	0.5	0.3	0.3
working plane	0.2	0.2	0.2	0.2	0.2	0.2	0.2	0.2	0.2	0.2
Room dimensions	Viewed crosswise					Viewed endwise				
x = 2H y = 2H	21.8	23.3	22.1	23.5	23.7	21.6	23.0	21.8	23.3	23.5
3H	23.4	24.8	23.7	25.1	25.3	23.2	24.5	23.5	24.8	25.0
4H	24.2	25.5	24.5	25.8	26.0	23.9	25.2	24.2	25.5	25.7
6H	24.8	26.1	25.2	26.4	26.7	24.5	25.7	24.9	26.0	26.3
8H	25.1	26.3	25.5	26.6	26.9	24.8	26.0	25.1	26.3	26.6
12H	25.4	26.6	25.8	26.9	27.2	25.0	26.2	25.4	26.5	26.8
4H 2H	22.3	23.7	22.7	23.9	24.2	22.1	23.5	22.5	23.7	24.0
3H	24.2	25.3	24.6	25.7	26.0	24.0	25.1	24.3	25.4	25.8
4H	25.1	26.1	25.5	26.5	26.8	24.8	25.9	25.2	26.2	26.6
6H	25.9	26.9	26.3	27.2	27.6	25.6	26.6	26.1	27.0	27.3
8H	26.3	27.2	26.7	27.6	28.0	26.0	26.9	26.4	27.3	27.7
12H	26.7	27.5	27.1	27.9	28.3	26.4	27.2	26.8	27.6	28.0
8H 4H	25.4	26.3	25.8	26.7	27.1	25.2	26.1	25.6	26.5	26.9
6H	26.4	27.2	26.9	27.6	28.1	26.2	26.9	26.7	27.4	27.8
8H	27.0	27.6	27.5	28.1	28.6	26.7	27.4	27.2	27.8	28.3
12H	27.5	28.1	28.0	28.6	29.1	27.2	27.8	27.7	28.3	28.8
12H 4H	25.4	26.2	25.9	26.7	27.1	25.2	26.0	25.7	26.5	26.9
6H	26.6	27.2	27.0	27.7	28.1	26.3	27.0	26.8	27.4	27.9
8H	27.2	27.7	27.7	28.2	28.7	26.9	27.5	27.4	28.0	28.5
Variations with the observer position at spacings:										
S = 1.0H	+ 0.2 / - 0.2					+ 0.2 / - 0.2				
1.5H	+ 0.1 / - 0.3					+ 0.1 / - 0.3				
2.0H	+ 0.1 / - 0.2					+ 0.1 / - 0.2				

CIE Pub.117 Corrected 19647 lm Total Lamp Luminous Flux.(8log(F/F0) = 10.3)

C Range: 0 - 360DEG
 C Interval: 22.5DEG
 Test Speed: HIGH
 Temperature:25.2DEG
 Operators:East
 Test Date:2020-10-26

γ Range: 0 - 180DEG
 γ Interval: 1.0DEG
 Test System:EVERFINE GO-R5000_V2 SYSTEM V2.0.351
 Humidity:43%
 Test Distance:2.492m [K=1.0000]
 Remarks:

UTILIZATION FACTORS TABLE

Test:U:230.1V I:0.6627A P:148.5W PF:0.9738 Lamp Flux:19647x1 lm		
NAME:	TYPE:N/A	WEIGHT:N/A
SPEC.:N/A	DIM.: N/A	SERIAL No.:N/A
MFR.: ERS	SUR.:N/A	Shielding Angle:N/A

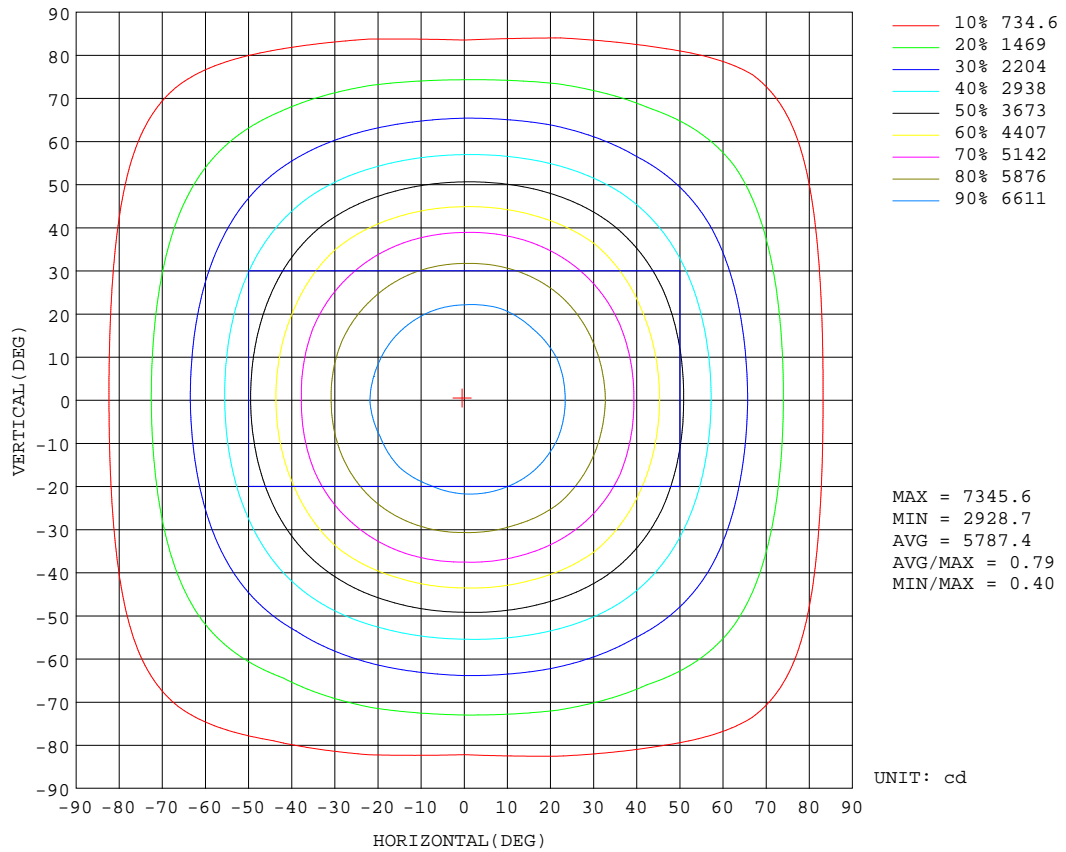
REFLECTANCE										
Ceiling	0.8	0.8	0.8	0.7	0.7	0.7	0.5	0.5	0.5	0
Walls	0.7	0.5	0.3	0.7	0.5	0.3	0.7	0.5	0.3	0
Working plane	0.2	0.2	0.2	0.2	0.2	0.2	0.2	0.2	0.2	0
ROOM INDEX	UTILIZATION FACTORS(PERCENT) $k(RI) \times RCR = 5$									
k = 0.60	59	47	40	58	47	40	57	46	40	34
0.80	68	57	50	67	56	49	65	56	49	42
1.00	76	65	58	75	65	58	73	66	57	50
1.25	83	73	66	82	72	65	79	70	64	57
1.50	88	78	71	86	77	70	83	75	69	62
2.00	94	86	79	93	85	78	89	82	77	69
2.50	98	90	84	96	89	83	92	86	81	73
3.00	102	94	89	99	93	88	95	90	85	77
4.00	105	99	95	103	98	93	99	94	90	81
5.00	108	103	98	105	101	97	101	97	94	84
ROOM INDEX	UF(total)									Direct
According to DIN EN 13032-2 2004			Suspended				SHRNOM = 1.25			

C Range: 0 - 360DEG
 C Interval: 22.5DEG
 Test Speed: HIGH
 Temperature:25.2DEG
 Operators:East
 Test Date:2020-10-26

γ Range: 0 - 180DEG
 γ Interval: 1.0DEG
 Test System:EVERFINE GO-R5000_V2 SYSTEM V2.0.351
 Humidity:43%
 Test Distance:2.492m [K=1.0000]
 Remarks:

ISOCANDELA DIAGRAM

Test:U:230.1V I:0.6627A P:148.5W PF:0.9738 Lamp Flux:19647x1 lm		
NAME:	TYPE:N/A	WEIGHT:N/A
SPEC.:N/A	DIM.: N/A	SERIAL No.:N/A
MFR.: ERS	SUR.:N/A	Shielding Angle:N/A

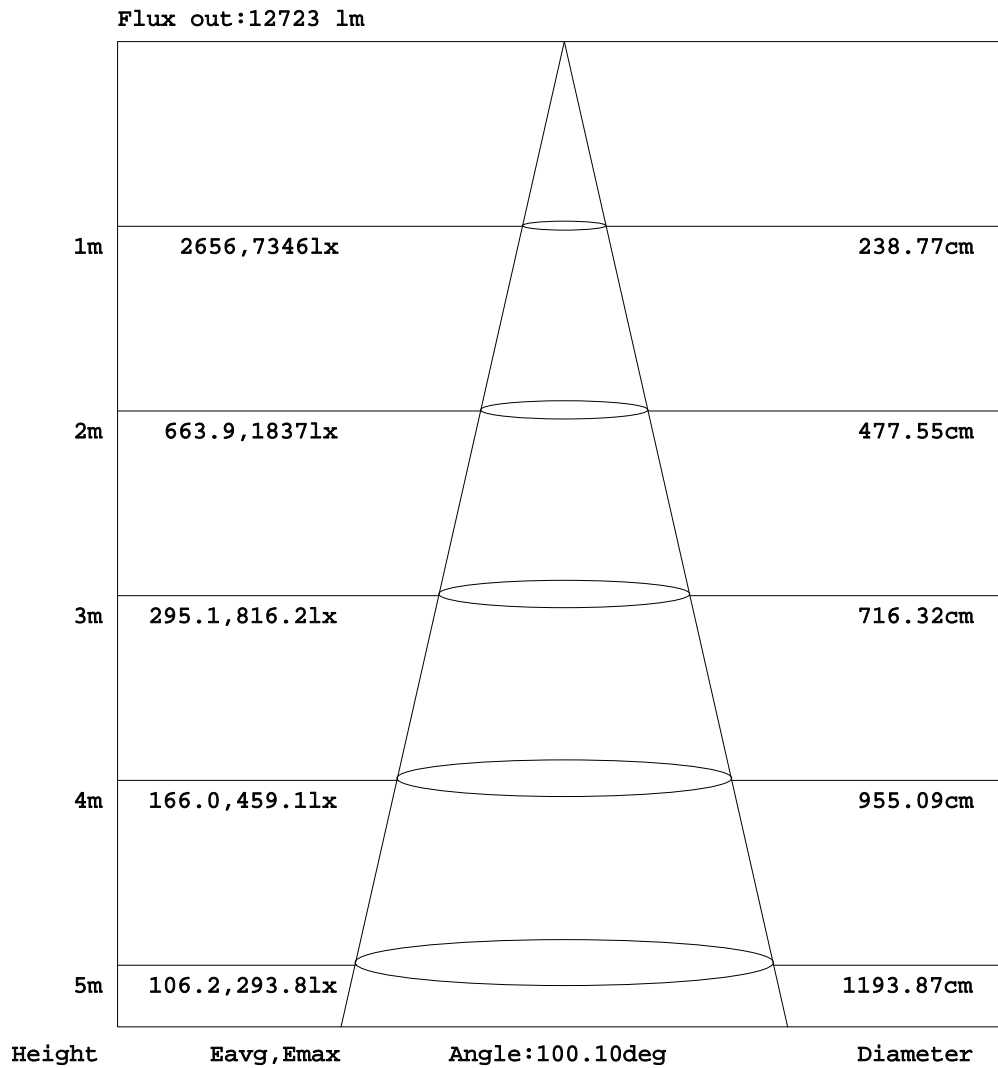


C Range: 0 - 360DEG
 C Interval: 22.5DEG
 Test Speed: HIGH
 Temperature:25.2DEG
 Operators:East
 Test Date:2020-10-26

γ Range: 0 - 180DEG
 γ Interval: 1.0DEG
 Test System:EVERFINE GO-R5000_V2 SYSTEM V2.0.351
 Humidity:43%
 Test Distance:2.492m [K=1.0000]
 Remarks:

AAI Figure

Test:U:230.1V I:0.6627A P:148.5W PF:0.9738 Lamp Flux:19647x1 lm		
NAME:	TYPE:N/A	WEIGHT:N/A
SPEC.:N/A	DIM.: N/A	SERIAL No.:N/A
MFR.: ERS	SUR.:N/A	Shielding Angle:N/A



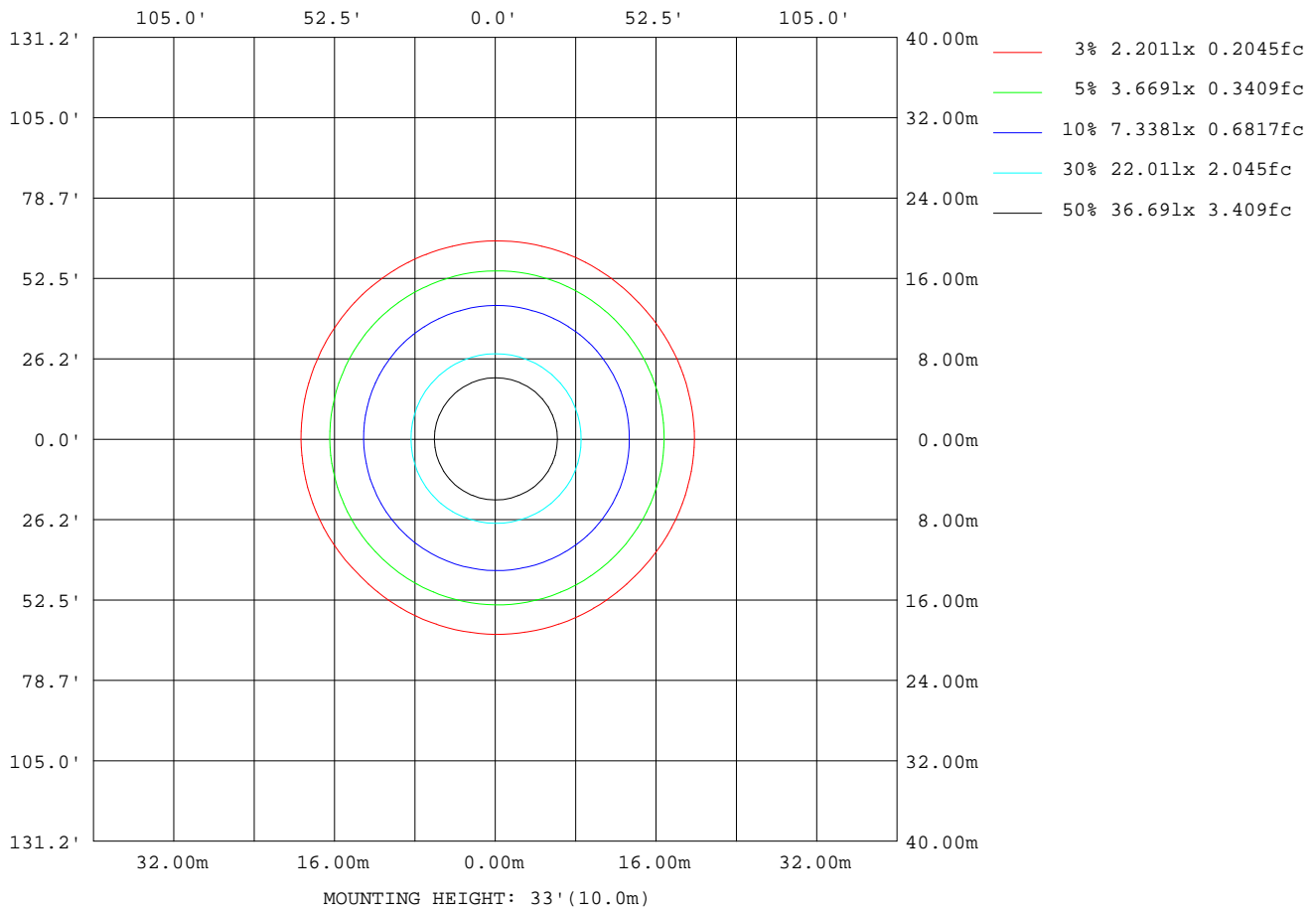
Note:The Curves indicate the illuminated area and the average illumination when the luminaire is at different distance.

C Range: 0 - 360DEG
 C Interval: 22.5DEG
 Test Speed: HIGH
 Temperature:25.2DEG
 Operators:East
 Test Date:2020-10-26

γ Range: 0 - 180DEG
 γ Interval: 1.0DEG
 Test System:EVERFINE GO-R5000_V2 SYSTEM V2.0.351
 Humidity:43%
 Test Distance:2.492m [K=1.0000]
 Remarks:

ISOLUX DIAGRAM

Test:U:230.1V I:0.6627A P:148.5W PF:0.9738 Lamp Flux:19647x1 lm		
NAME:	TYPE:N/A	WEIGHT:N/A
SPEC.:N/A	DIM.: N/A	SERIAL No.:N/A
MFR.: ERS	SUR.:N/A	Shielding Angle:N/A



C Range: 0 - 360DEG
 C Interval: 22.5DEG
 Test Speed: HIGH
 Temperature:25.2DEG
 Operators:East
 Test Date:2020-10-26

γ Range: 0 - 180DEG
 γ Interval: 1.0DEG
 Test System:EVERFINE GO-R5000_V2 SYSTEM V2.0.351
 Humidity:43%
 Test Distance:2.492m [K=1.0000]
 Remarks:

LED Avg.L Report

Test:U:230.1V I:0.6627A P:148.5W PF:0.9738 Lamp Flux:19647x1 lm		
NAME:	TYPE:N/A	WEIGHT:N/A
SPEC.:N/A	DIM.: N/A	SERIAL No.:N/A
MFR.: ERS	SUR.:N/A	Shielding Angle:N/A

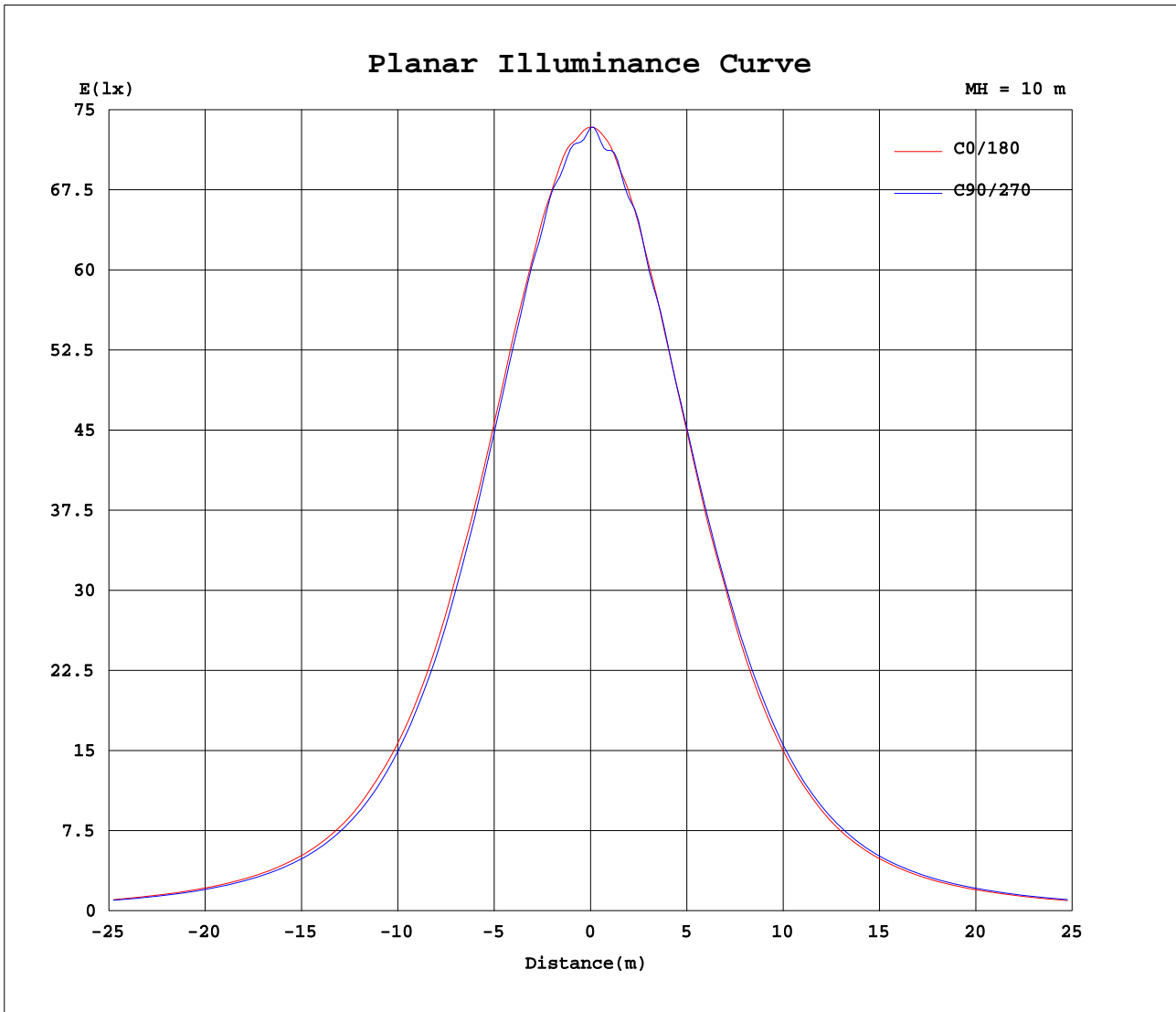
AvgL	cd/m2
L_0~180(65)av	13239
L_0~180(75)av	13081
L_0~180(85)av	17626
L_90~270(65)av	13249
L_90~270(75)av	13381
L_90~270(85)av	17585
L_45(65)av	12834
L_45(75)av	12865
L_45(85)av	18566

Standard: GB/T 29293-2012

C Range: 0 - 360DEG
 C Interval: 22.5DEG
 Test Speed: HIGH
 Temperature:25.2DEG
 Operators:East
 Test Date:2020-10-26

γ Range: 0 - 180DEG
 γ Interval: 1.0DEG
 Test System:EVERFINE GO-R5000_V2 SYSTEM V2.0.351
 Humidity:43%
 Test Distance:2.492m [K=1.0000]
 Remarks:

Planar Illuminance Curve



C Range: 0 - 360DEG
 C Interval: 22.5DEG
 Test Speed: HIGH
 Temperature: 25.2DEG
 Operators: East
 Test Date: 2020-10-26

γ Range: 0 - 180DEG
 γ Interval: 1.0DEG
 Test System: EVERFINE GO-R5000_V2 SYSTEM V2.0.351
 Humidity: 43%
 Test Distance: 2.492m [K=1.0000]
 Remarks:

LUMINOUS DISTRIBUTION INTENSITY DATA

Test:U:230.1V I:0.6627A P:148.5W PF:0.9738 Lamp Flux:19647x1 lm		
NAME:	TYPE:N/A	WEIGHT:N/A
SPEC.:N/A	DIM.: N/A	SERIAL No.:N/A
MFR.: ERS	SUR.:N/A	Shielding Angle:N/A

Table--1

UNIT: cd

C(DEG) γ (DEG)	0	22.5	45	67.5	90	112.5	135	157.5	180	202.5	225	247.5	270	292.5	315	337.5			
0	7336	7336	7336	7336	7336	7336	7336	7336	7336	7336	7336	7336	7336	7336	7336	7336			
5	7281	7192	7202	7243	7258	7244	7200	7204	7288	7259	7183	7192	7201	7174	7170	7253			
10	7199	7166	7164	7107	7142	7108	7102	7065	7160	7037	7172	7118	7104	7113	7228	7116			
15	7041	7026	7030	6959	6943	6941	6955	6952	6990	6971	6907	7031	7003	7054	6959	7003			
20	6808	6754	6747	6765	6712	6685	6697	6691	6736	6727	6753	6697	6760	6750	6821	6810			
25	6490	6509	6457	6421	6378	6368	6381	6372	6388	6364	6388	6381	6419	6438	6460	6497			
30	6096	6096	6069	5982	5947	5955	5962	5970	5960	5994	5994	6024	6029	6059	6106	6104			
35	5669	5631	5566	5493	5453	5451	5461	5476	5499	5491	5528	5550	5569	5602	5626	5659			
40	5057	5076	4999	4906	4855	4853	4878	4871	4866	4917	4963	4999	5011	5052	5080	5088			
45	4441	4414	4407	4281	4218	4209	4261	4213	4235	4264	4373	4371	4390	4433	4515	4445			
50	3796	3792	3734	3633	3567	3551	3558	3586	3605	3653	3718	3726	3751	3785	3832	3838			
55	3169	3158	3120	3043	2982	2959	2969	2965	2994	3047	3103	3124	3144	3185	3212	3197			
60	2677	2632	2577	2547	2511	2474	2439	2465	2492	2541	2593	2611	2649	2666	2673	2676			
65	2264	2201	2103	2130	2118	2068	1987	2047	2087	2098	2144	2195	2236	2244	2202	2246			
70	1835	1787	1677	1735	1732	1681	1572	1646	1688	1698	1730	1813	1848	1848	1781	1841			
75	1377	1350	1278	1318	1287	1279	1187	1237	1256	1297	1331	1406	1407	1433	1383	1425			
80	961	974	934	943	887	920	864	888	879	935	968	1006	976	1032	1014	1033			
85	618	645	620	613	551	591	565	593	577	629	649	687	641	700	682	691			
90	353	361	351	332	305	313	307	296	309	349	369	385	353	391	392	391			
95	58.9	66.6	122	173	184	155	101	37.0	8.70	16.3	119	193	203	197	127	1.37			
100	142	99.4	44.5	71.0	87.5	61.6	36.4	93.4	127	99.3	42.6	69.1	91.0	68.6	45.1	109			
105	79.3	50.3	4.84	4.85	19.2	7.29	4.61	40.7	63.8	45.5	5.01	1.61	14.6	1.61	13.2	56.2			
110	27.7	4.62	2.65	2.58	2.55	2.57	2.67	3.16	19.0	5.19	3.97	1.88	1.85	1.86	2.53	13.0			
115	3.09	3.03	2.86	2.81	2.74	2.79	2.88	3.08	2.37	2.28	2.21	3.14	2.36	2.52	2.10	2.18			
120	3.38	3.32	3.19	3.21	3.08	3.16	3.29	3.32	2.65	2.44	2.39	8.45	10.6	3.92	2.29	2.31			
125	3.80	3.73	3.77	3.78	3.66	3.72	3.80	3.87	2.95	2.64	2.67	2.63	2.61	2.67	2.56	2.51			
130	4.57	4.57	4.61	4.67	4.50	4.57	4.62	4.62	3.20	2.98	2.95	2.95	2.82	3.04	2.86	2.80			
135	5.53	5.58	5.67	5.72	5.62	5.69	5.54	5.46	3.51	3.31	3.27	3.31	3.22	3.34	3.32	3.21			
140	6.79	6.98	7.18	7.10	7.21	7.20	6.97	6.74	3.86	3.54	3.65	3.69	3.61	3.65	3.68	3.61			
145	8.39	8.62	9.05	8.99	9.05	8.97	8.71	8.23	4.19	3.89	4.11	4.20	4.16	4.14	4.13	4.19			
150	9.49	9.90	10.3	10.4	10.3	10.3	10.0	9.51	4.55	4.29	4.53	4.48	4.47	4.51	4.59	4.63			
155	10.7	11.1	11.2	11.3	11.3	11.3	11.0	10.7	5.05	4.85	5.09	5.10	5.00	5.11	5.09	5.32			
160	11.2	11.3	11.4	11.7	11.5	11.6	11.3	10.9	5.83	5.70	5.61	5.45	5.46	5.47	5.45	5.93			
165	10.6	10.9	10.9	10.8	10.9	10.9	10.9	10.6	6.37	6.29	6.06	5.82	5.60	5.69	5.72	6.39			
170	10.2	10.1	9.98	9.76	9.97	9.94	10.1	10.1	6.93	6.92	6.49	6.31	6.06	6.08	6.10	6.76			
175	9.58	9.43	9.29	9.09	8.77	9.21	9.38	9.58	7.78	7.79	7.47	7.15	6.98	6.82	7.08	7.55			
180	8.61	8.23	8.23	7.80	7.63	7.82	8.37	8.90	8.63	8.64	8.29	8.29	7.82	7.92	8.01	8.52			

C Range: 0 - 360DEG
 C Interval: 22.5DEG
 Test Speed: HIGH
 Temperature:25.2DEG
 Operators:East
 Test Date:2020-10-26

γ Range: 0 - 180DEG
 γ Interval: 1.0DEG
 Test System:EVERFINE GO-R5000_V2 SYSTEM V2.0.351
 Humidity:43%
 Test Distance:2.492m [K=1.0000]
 Remarks: