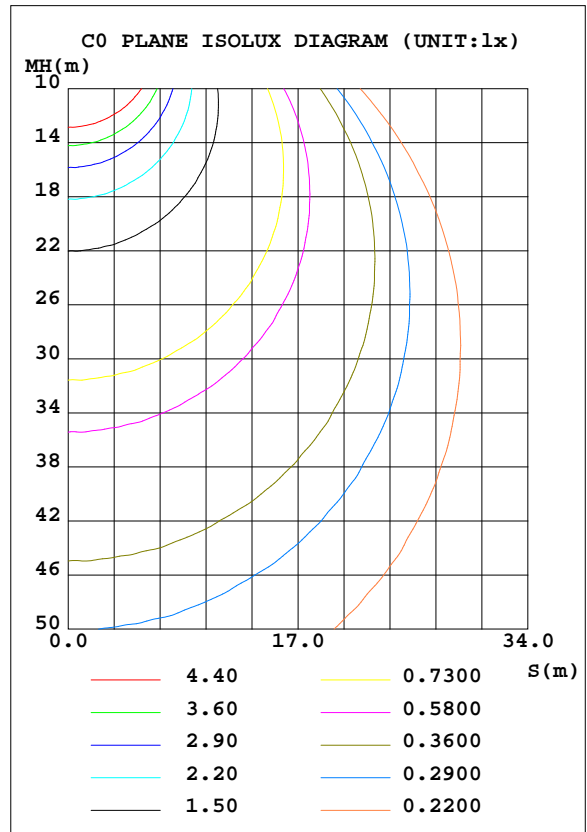
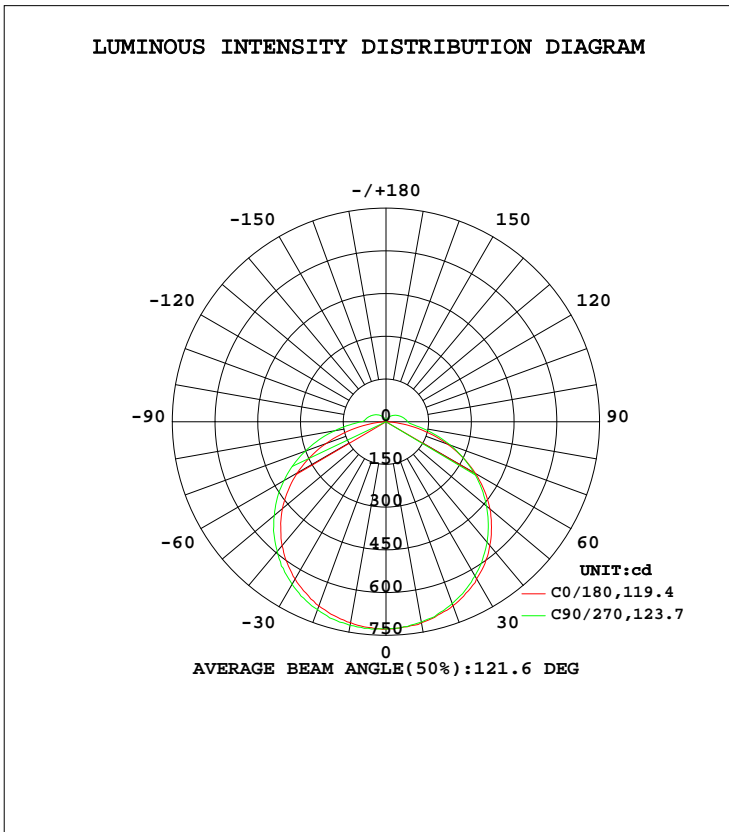


LUMINAIRE PHOTOMETRIC TEST REPORT

Test:U:230.1V I:0.0868A P:18.53W PF:0.9279 Lamp Flux:2526.91x1 lm		
NAME: LED Batten Light	TYPE:N/A	WEIGHT:N/A
SPEC.:N/A	DIM.: N/A	SERIAL No.:N/A
MFR.: ERS Technology	SUR.:N/A	Shielding Angle:N/A

DATA OF LAMP		PHOTOMETRIC DATA Eff: 136.37 lm/W			
MODEL	RSZ210112504-10	I _{max} (cd)	730.2	S/MH(C0/180)	1.30
NOMINAL POWER(W)	18	LOR(%)	100.0	S/MH(C90/270)	1.35
RATED VOLTAGE(V)	230	TOTAL FLUX(lm)	2526.9	η UP, DN(C0-180)	3.2,44.9
NOMINAL FLUX(lm)	2526.91	CIE CLASS	DIRECT	η UP, DN(C180-360)	3.4,48.6
LAMPS INSIDE	1	η up(%)	6.6	CIBSE SHR NOM	1.50
TEST VOLTAGE(V)	230	η down(%)	93.4	CIBSE SHR MAX	1.50



C Range: 0 - 360DEG
 C Interval: 22.5DEG
 Test Speed: HIGH
 Temperature:25.0DEG
 Operators:Ben
 Test Date:2021-01-14

γ Range: 0 - 180DEG
 γ Interval: 1.0DEG
 Test System:EVERFINE GO-R5000_V2 SYSTEM V2.0.351
 Humidity:48%
 Test Distance:2.503m [K=1.0000]
 Remarks:

ZONAL FLUX DIAGRAM

ZONAL FLUX DIAGRAM:

γ	C0	C45	C90	C135	C180	C225	C270	C315	γ	Φ zone	Φ total	%lum,lamp
10	717.0	715.0	714.7	715.1	716.4	722.6	726.7	722.9	0- 10	69.01	69.01	2.73,2.73
20	687.5	682.6	680.0	682.9	688.5	698.7	702.1	699.1	10- 20	199.7	268.7	10.6,10.6
30	636.9	631.2	625.2	628.5	638.1	655.7	659.3	655.2	20- 30	308.2	576.9	22.8,22.8
40	567.0	559.7	552.5	556.5	567.8	589.8	593.7	589.9	30- 40	381.4	958.3	37.9,37.9
50	476.2	469.8	461.1	464.1	475.2	506.2	511.6	504.9	40- 50	409.4	1368	54.1,54.1
60	362.2	362.9	355.9	356.0	359.5	403.0	413.6	402.1	50- 60	387.0	1755	69.4,69.4
70	229.1	241.7	240.5	232.7	225.1	284.4	300.9	283.2	60- 70	314.5	2069	81.9,81.9
80	88.73	119.8	128.0	110.6	82.77	158.0	183.1	157.2	70- 80	202.6	2272	89.9,89.9
90	0.3855	54.03	77.09	53.26	0.1050	60.08	87.33	59.93	80- 90	89.16	2361	93.4,93.4
100	0.2533	44.36	66.46	43.69	0.1348	46.59	69.58	46.54	90-100	48.21	2409	95.3,95.3
110	0.3253	36.09	55.92	35.66	0.2078	38.36	59.00	38.33	100-110	38.86	2448	96.9,96.9
120	0.4068	28.74	45.49	28.45	0.3083	30.79	48.52	30.66	110-120	29.87	2478	98.1,98.1
130	0.5865	22.03	35.64	21.87	0.4192	23.84	38.02	23.78	120-130	21.46	2499	98.9,98.9
140	0.9413	16.00	26.44	15.92	0.5169	17.30	28.29	17.89	130-140	14.12	2513	99.5,99.5
150	1.304	10.53	17.83	10.58	0.6623	10.46	19.23	13.43	140-150	8.190	2522	99.8,99.8
160	1.554	5.613	9.854	5.603	0.8763	4.236	10.89	9.174	150-160	3.862	2526	99.9,99.9
170	1.499	2.066	3.275	1.861	1.007	1.596	4.138	3.955	160-170	1.213	2527	100,100
180	1.265	1.269	1.364	1.274	1.263	1.259	1.308	1.317	170-180	0.1748	2527	100,100
DEG	LUMINOUS INTENSITY:cd									UNIT:lm		

Conical surface Flux(90deg): 1162.6 lm

%lum = 46.0%
%lamp = 46.0%

Conical surface Flux(120deg): 1754.7 lm

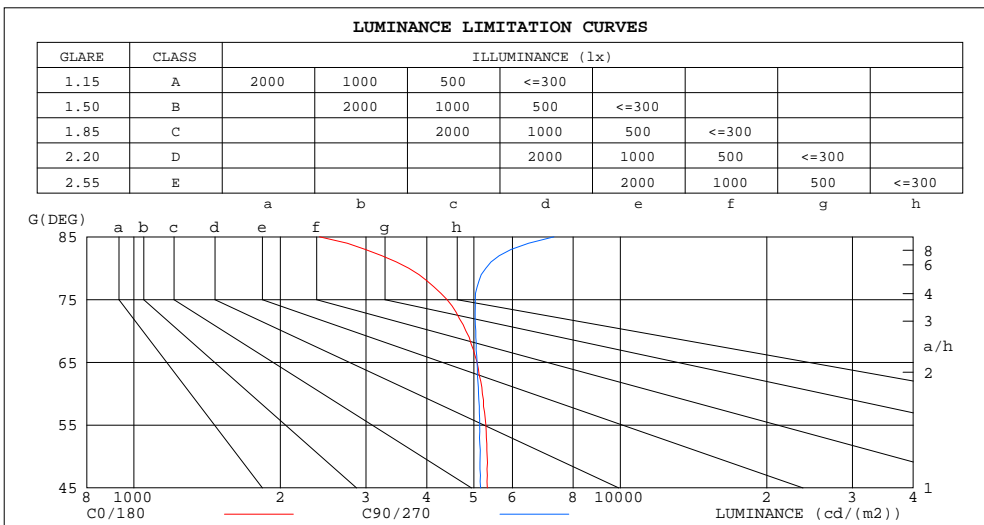
%lum = 69.4%
%lamp = 69.4%

C Range: 0 - 360DEG
C Interval: 22.5DEG
Test Speed: HIGH
Temperature:25.0DEG
Operators:Ben
Test Date:2021-01-14

γ Range: 0 - 180DEG
γ Interval: 1.0DEG
Test System:EVERFINE GO-R5000_V2 SYSTEM V2.0.351
Humidity:48%
Test Distance:2.503m [K=1.0000]
Remarks:

LUMINANCE LIMITATION CURVES

Test:U:230.1V I:0.0868A P:18.53W PF:0.9279 Lamp Flux:2526.91x1 lm		
NAME: LED Batten Light	TYPE:N/A	WEIGHT:N/A
SPEC.:N/A	DIM.: N/A	SERIAL No.:N/A
MFR.: ERS Technology	SUR.:N/A	Shielding Angle:N/A



LUMINANCE cd/(m2)		
G (DEG)	C0/180	C90/270
85	2408	7303
80	3672	5292
75	4401	5032
70	4815	5047
65	5074	5074
60	5206	5110
55	5291	5140
50	5324	5150
45	5327	5162

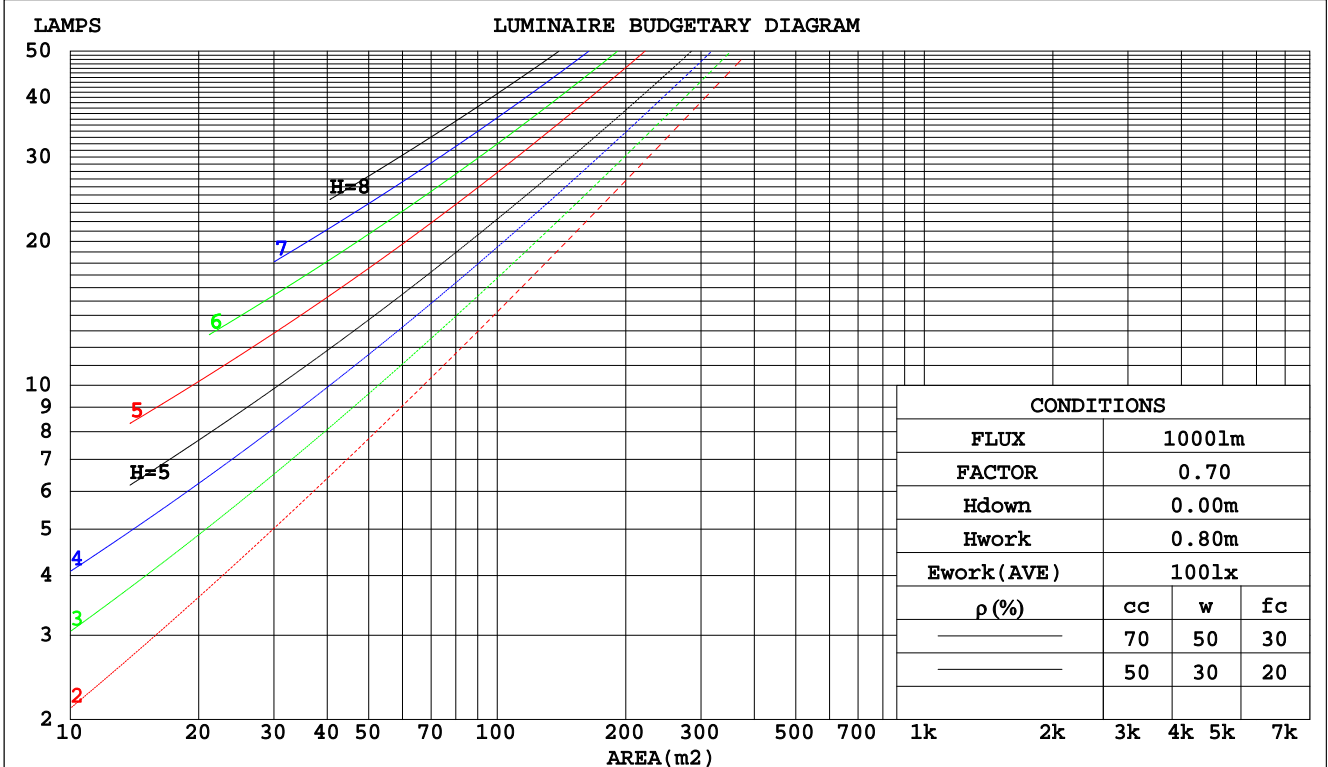
C Range: 0 - 360DEG
 C Interval: 22.5DEG
 Test Speed: HIGH
 Temperature: 25.0DEG
 Operators: Ben
 Test Date: 2021-01-14

γ Range: 0 - 180DEG
 γ Interval: 1.0DEG
 Test System: EVERFINE GO-R5000_V2 SYSTEM V2.0.351
 Humidity: 48%
 Test Distance: 2.503m [K=1.0000]
 Remarks:

CU AND LUMINAIRE BUDGETARY ESTIMATE DIAGRAM

Test:U:230.1V I:0.0868A P:18.53W PF:0.9279 Lamp Flux:2526.91x1 lm		
NAME: LED Batten Light	TYPE:N/A	WEIGHT:N/A
SPEC.:N/A	DIM.: N/A	SERIAL No.:N/A
MFR.: ERS Technology	SUR.:N/A	Shielding Angle:N/A

pcc	80%			70%			50%			30%			10%			0
pw	50%	30%	10%	50%	30%	10%	50%	30%	10%	50%	30%	10%	50%	30%	10%	0
pfc	20%			20%			20%			20%			20%			0
RCR	RCR:Room Cavity Ratio															
	Coefficients of Utilization(CU)															
0.0	1.17	1.17	1.17	1.14	1.14	1.14	1.07	1.07	1.07	1.01	1.01	1.01	.96	.96	.96	.93
1.0	1.01	.96	.92	.98	.94	.90	.93	.89	.86	.87	.85	.82	.83	.81	.78	.76
2.0	.87	.80	.74	.85	.78	.72	.80	.75	.70	.76	.71	.67	.72	.68	.65	.62
3.0	.76	.68	.61	.74	.66	.60	.70	.63	.58	.66	.61	.56	.63	.58	.54	.52
4.0	.67	.58	.51	.65	.57	.50	.62	.55	.49	.59	.53	.47	.56	.51	.46	.44
5.0	.60	.50	.44	.58	.49	.43	.55	.48	.42	.53	.46	.41	.50	.44	.40	.37
6.0	.54	.44	.38	.52	.44	.37	.50	.42	.36	.47	.41	.36	.45	.39	.35	.33
7.0	.48	.39	.33	.47	.39	.33	.45	.38	.32	.43	.36	.31	.41	.35	.31	.29
8.0	.44	.35	.29	.43	.35	.29	.41	.34	.29	.39	.33	.28	.38	.32	.27	.25
9.0	.40	.32	.26	.39	.32	.26	.38	.31	.26	.36	.30	.25	.35	.29	.25	.23
10.0	.37	.29	.24	.36	.29	.24	.35	.28	.23	.34	.27	.23	.32	.26	.22	.21



C Range: 0 - 360DEG
 C Interval: 22.5DEG
 Test Speed: HIGH
 Temperature: 25.0DEG
 Operators: Ben
 Test Date: 2021-01-14

γ Range: 0 - 180DEG
 γ Interval: 1.0DEG
 Test System: EVERFINE GO-R5000_V2 SYSTEM V2.0.351
 Humidity: 48%
 Test Distance: 2.503m [K=1.0000]
 Remarks:

WEC AND CCEC

Test:U:230.1V I:0.0868A P:18.53W PF:0.9279 Lamp Flux:2526.91x1 lm		
NAME: LED Batten Light	TYPE:N/A	WEIGHT:N/A
SPEC.:N/A	DIM.: N/A	SERIAL No.:N/A
MFR.: ERS Technology	SUR.:N/A	Shielding Angle:N/A

ρcc	80%			70%			50%			30%			10%			0
ρw	50%	30%	10%	50%	30%	10%	50%	30%	10%	50%	30%	10%	50%	30%	10%	0
ρfc	20%			20%			20%			20%			20%			0
RCR	RCR:Room Cavity Ratio						Wall Exitance Coefficients(WEC)									
0.0																
1.0	.336	.191	.061	.327	.186	.059	.310	.178	.057	.294	.170	.054	.279	.162	.052	
2.0	.308	.169	.052	.299	.165	.051	.284	.158	.049	.270	.151	.047	.257	.145	.046	
3.0	.281	.149	.045	.273	.146	.044	.260	.141	.043	.247	.135	.042	.235	.130	.040	
4.0	.257	.133	.039	.250	.131	.039	.238	.126	.038	.227	.122	.037	.216	.117	.036	
5.0	.236	.120	.035	.230	.118	.034	.219	.114	.034	.209	.110	.033	.199	.106	.032	
6.0	.218	.109	.031	.213	.107	.031	.203	.104	.030	.193	.100	.030	.185	.097	.029	
7.0	.202	.100	.028	.197	.098	.028	.188	.095	.027	.180	.092	.027	.172	.089	.026	
8.0	.188	.092	.026	.184	.091	.026	.176	.088	.025	.168	.085	.025	.161	.083	.024	
9.0	.176	.085	.024	.172	.084	.024	.165	.081	.023	.158	.079	.023	.151	.077	.022	
10.0	.165	.079	.022	.162	.078	.022	.155	.076	.021	.148	.074	.021	.142	.072	.021	

ρcc	80%			70%			50%			30%			10%			0
ρw	50%	30%	10%	50%	30%	10%	50%	30%	10%	50%	30%	10%	50%	30%	10%	0
ρfc	20%			20%			20%			20%			20%			0
RCR	RCR:Room Cavity Ratio						Ceiling Cavity Exitance Coefficients(CCEC)									
0.0	.241	.241	.241	.206	.206	.206	.140	.140	.140	.081	.081	.081	.026	.026	.026	
1.0	.233	.206	.183	.199	.177	.157	.136	.122	.109	.078	.071	.063	.025	.023	.020	
2.0	.225	.183	.147	.193	.157	.127	.132	.109	.089	.076	.063	.052	.024	.020	.017	
3.0	.218	.165	.124	.187	.143	.107	.128	.099	.075	.074	.058	.044	.024	.019	.015	
4.0	.210	.152	.108	.180	.132	.094	.124	.092	.066	.072	.054	.039	.023	.018	.013	
5.0	.203	.142	.098	.174	.123	.085	.120	.086	.060	.069	.050	.036	.022	.016	.012	
6.0	.195	.134	.090	.168	.116	.079	.116	.081	.056	.067	.048	.033	.022	.016	.011	
7.0	.188	.127	.085	.162	.110	.074	.112	.077	.052	.065	.046	.031	.021	.015	.010	
8.0	.182	.122	.080	.157	.105	.070	.108	.074	.050	.063	.044	.030	.020	.014	.010	
9.0	.176	.117	.077	.151	.101	.067	.105	.071	.048	.061	.042	.028	.020	.014	.009	
10.0	.170	.112	.074	.146	.098	.065	.102	.069	.046	.059	.041	.027	.019	.013	.009	

C Range: 0 - 360DEG
 C Interval: 22.5DEG
 Test Speed: HIGH
 Temperature:25.0DEG
 Operators:Ben
 Test Date:2021-01-14

γ Range: 0 - 180DEG
 γ Interval: 1.0DEG
 Test System:EVERFINE GO-R5000_V2 SYSTEM V2.0.351
 Humidity:48%
 Test Distance:2.503m [K=1.0000]
 Remarks:

UGR(Unified Glare Rating) Table

Test:U:230.1V I:0.0868A P:18.53W PF:0.9279 Lamp Flux:2526.91x1 lm										
NAME: LED Batten Light					TYPE:N/A			WEIGHT:N/A		
SPEC.:N/A					DIM.: N/A			SERIAL No.:N/A		
MFR.: ERS Technology					SUR.:N/A			Shielding Angle:N/A		
ceiling/cavity	0.7	0.7	0.5	0.5	0.3	0.7	0.7	0.5	0.5	0.3
walls	0.5	0.3	0.5	0.3	0.3	0.5	0.3	0.5	0.3	0.3
working plane	0.2	0.2	0.2	0.2	0.2	0.2	0.2	0.2	0.2	0.2
Room dimensions	Viewed crosswise					Viewed endwise				
x = 2H y = 2H	18.2	19.7	18.6	20.0	20.4	18.1	19.6	18.5	19.9	20.3
3H	19.8	21.2	20.2	21.6	21.9	19.9	21.2	20.2	21.6	21.9
4H	20.5	21.8	20.9	22.1	22.5	20.6	21.9	21.0	22.3	22.7
6H	20.9	22.1	21.3	22.5	22.9	21.3	22.5	21.7	22.9	23.3
8H	21.0	22.1	21.4	22.5	23.0	21.6	22.7	22.0	23.1	23.6
12H	21.0	22.1	21.4	22.5	23.0	21.9	23.0	22.3	23.4	23.9
4H 2H	18.9	20.2	19.3	20.5	20.9	18.8	20.1	19.2	20.5	20.9
3H	20.7	21.8	21.1	22.2	22.7	20.7	21.8	21.2	22.3	22.7
4H	21.4	22.5	21.9	22.9	23.4	21.6	22.6	22.1	23.1	23.6
6H	22.0	22.9	22.5	23.3	23.9	22.4	23.3	22.9	23.8	24.3
8H	22.1	23.0	22.6	23.5	24.0	22.8	23.6	23.3	24.1	24.7
12H	22.2	23.0	22.7	23.5	24.0	23.2	24.0	23.7	24.5	25.0
8H 4H	21.7	22.6	22.3	23.1	23.6	21.9	22.8	22.4	23.3	23.8
6H	22.5	23.2	23.0	23.7	24.3	22.9	23.6	23.5	24.1	24.7
8H	22.7	23.4	23.3	23.9	24.5	23.4	24.1	24.0	24.6	25.2
12H	22.9	23.4	23.5	24.0	24.6	24.0	24.5	24.6	25.1	25.7
12H 4H	21.8	22.6	22.3	23.1	23.6	21.9	22.7	22.4	23.2	23.8
6H	22.6	23.2	23.1	23.7	24.3	23.0	23.6	23.5	24.2	24.8
8H	22.9	23.4	23.5	24.0	24.6	23.6	24.1	24.1	24.7	25.3
Variations with the observer position at spacings:										
S = 1.0H	+ 0.1 / - 0.2					+ 0.1 / - 0.2				
1.5H	+ 0.2 / - 0.3					+ 0.2 / - 0.3				
2.0H	+ 0.2 / - 0.4					+ 0.1 / - 0.4				

CIE Pub.117 Corrected 2527 lm Total Lamp Luminous Flux.(8log(F/F0) = 3.2)

C Range: 0 - 360DEG
 C Interval: 22.5DEG
 Test Speed: HIGH
 Temperature:25.0DEG
 Operators:Ben
 Test Date:2021-01-14

γ Range: 0 - 180DEG
 γ Interval: 1.0DEG
 Test System:EVERFINE GO-R5000_V2 SYSTEM V2.0.351
 Humidity:48%
 Test Distance:2.503m [K=1.0000]
 Remarks:

UTILIZATION FACTORS TABLE

Test:U:230.1V I:0.0868A P:18.53W PF:0.9279 Lamp Flux:2526.91x1 lm		
NAME: LED Batten Light	TYPE:N/A	WEIGHT:N/A
SPEC.:N/A	DIM.: N/A	SERIAL No.:N/A
MFR.: ERS Technology	SUR.:N/A	Shielding Angle:N/A

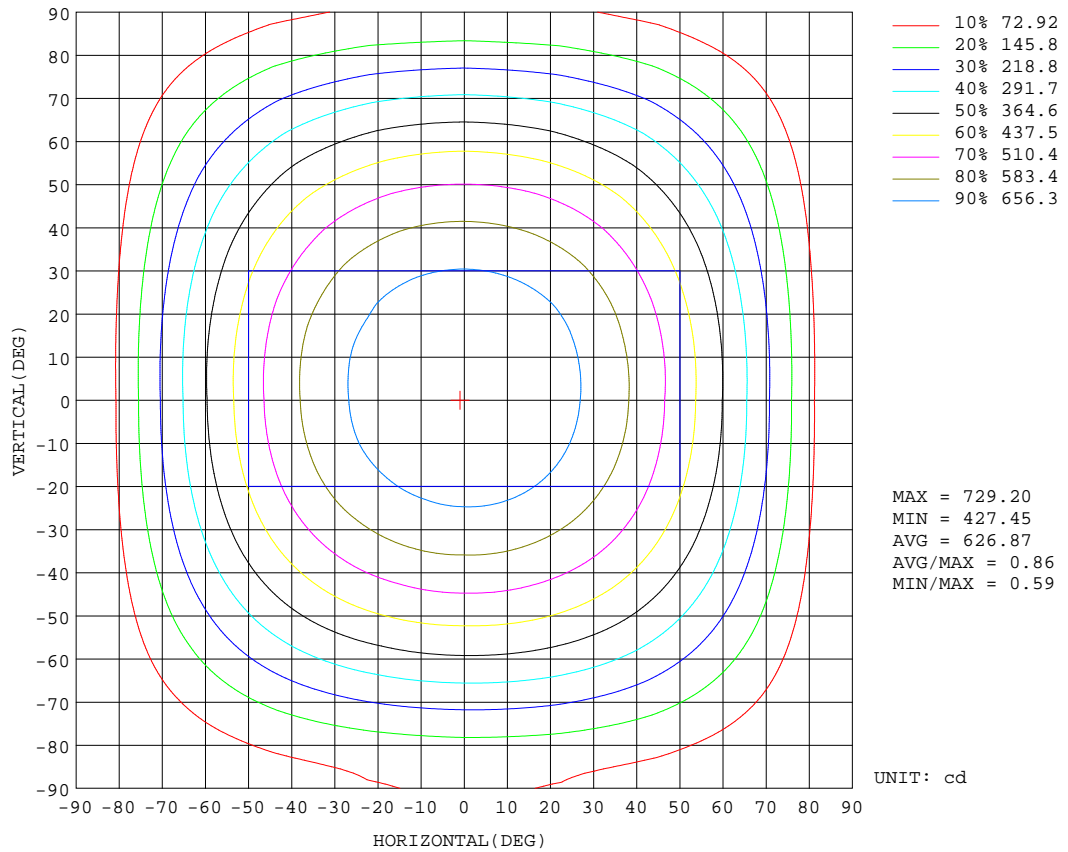
REFLECTANCE										
Ceiling	0.8	0.8	0.8	0.7	0.7	0.7	0.5	0.5	0.5	0
Walls	0.7	0.5	0.3	0.7	0.5	0.3	0.7	0.5	0.3	0
Working plane	0.2	0.2	0.2	0.2	0.2	0.2	0.2	0.2	0.2	0
ROOM INDEX	UTILIZATION FACTORS(PERCENT) $k(RI) \times RCR = 5$									
k = 0.60	53	41	34	53	41	34	51	40	34	27
0.80	63	51	43	62	50	43	60	49	42	35
1.00	71	60	52	70	59	51	67	60	51	43
1.25	79	67	60	77	66	59	74	64	58	50
1.50	84	73	65	82	72	65	78	69	63	54
2.00	91	81	74	89	80	73	84	77	71	62
2.50	95	86	80	92	85	78	88	81	76	66
3.00	99	91	85	96	89	83	91	85	80	70
4.00	103	96	91	100	94	89	95	90	86	75
5.00	106	100	95	102	97	93	97	93	89	78
ROOM INDEX	UF(total)									Direct
According to DIN EN 13032-2 2004			Suspended				SHRNOM = 1.25			

C Range: 0 - 360DEG
 C Interval: 22.5DEG
 Test Speed: HIGH
 Temperature:25.0DEG
 Operators:Ben
 Test Date:2021-01-14

γ Range: 0 - 180DEG
 γ Interval: 1.0DEG
 Test System:EVERFINE GO-R5000_V2 SYSTEM V2.0.351
 Humidity:48%
 Test Distance:2.503m [K=1.0000]
 Remarks:

ISOCANDELA DIAGRAM

Test:U:230.1V I:0.0868A P:18.53W PF:0.9279 Lamp Flux:2526.91x1 lm		
NAME: LED Batten Light	TYPE:N/A	WEIGHT:N/A
SPEC.:N/A	DIM.: N/A	SERIAL No.:N/A
MFR.: ERS Technology	SUR.:N/A	Shielding Angle:N/A

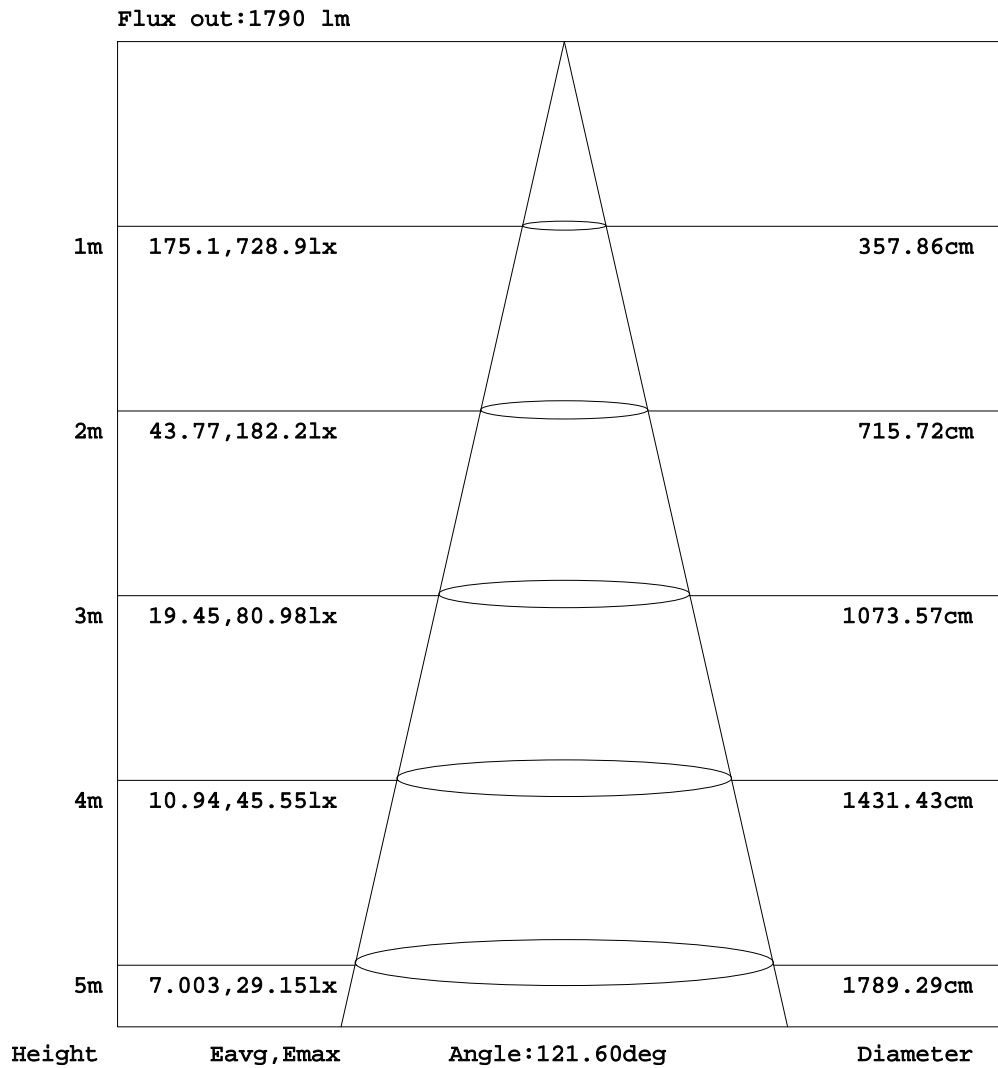


C Range: 0 - 360DEG
 C Interval: 22.5DEG
 Test Speed: HIGH
 Temperature:25.0DEG
 Operators:Ben
 Test Date:2021-01-14

γ Range: 0 - 180DEG
 γ Interval: 1.0DEG
 Test System:EVERFINE GO-R5000_V2 SYSTEM V2.0.351
 Humidity:48%
 Test Distance:2.503m [K=1.0000]
 Remarks:

AAI Figure

Test:U:230.1V I:0.0868A P:18.53W PF:0.9279 Lamp Flux:2526.91x1 lm		
NAME: LED Batten Light	TYPE:N/A	WEIGHT:N/A
SPEC.:N/A	DIM.: N/A	SERIAL No.:N/A
MFR.: ERS Technology	SUR.:N/A	Shielding Angle:N/A



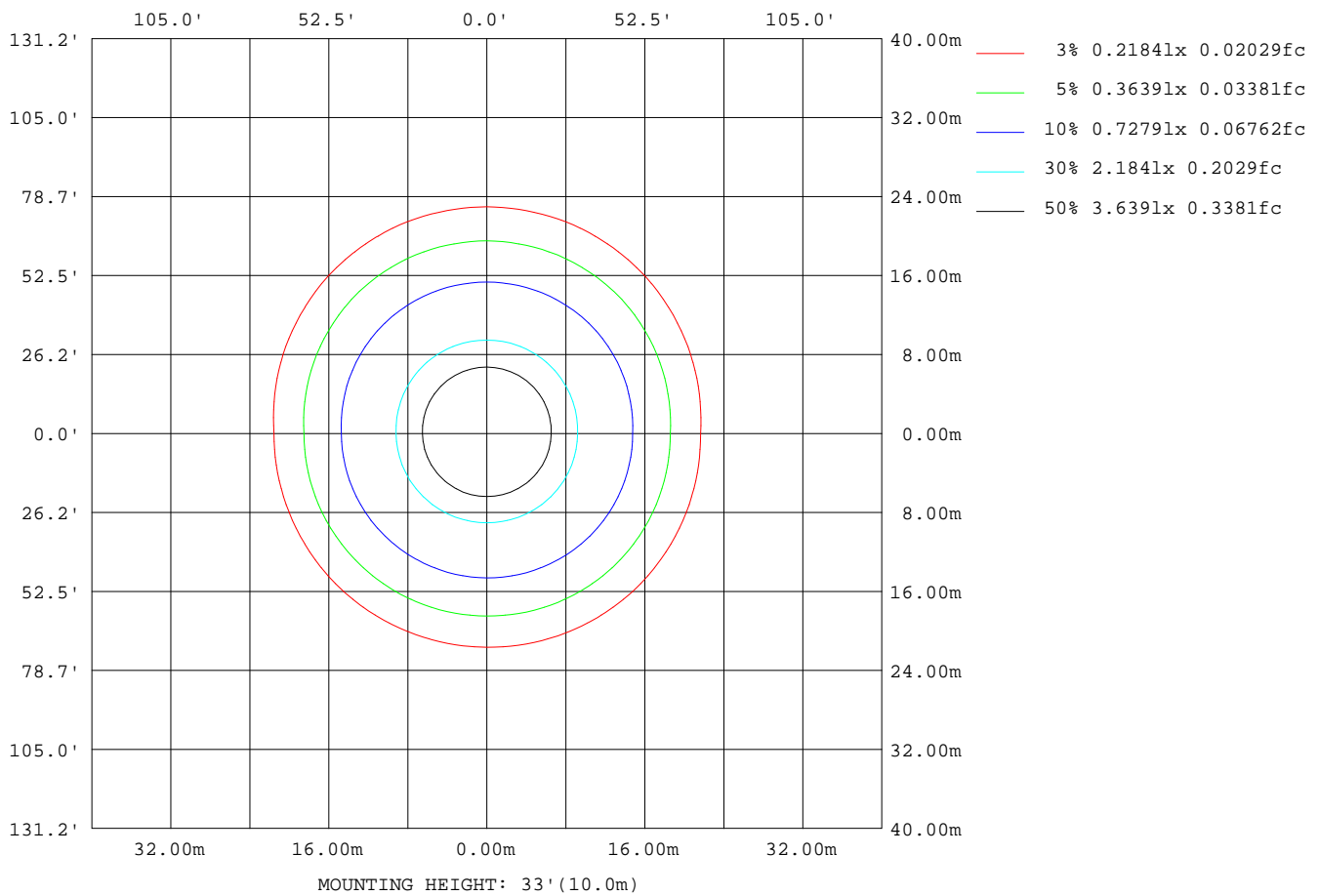
Note:The Curves indicate the illuminated area and the average illumination when the luminaire is at different distance.

C Range: 0 - 360DEG
 C Interval: 22.5DEG
 Test Speed: HIGH
 Temperature:25.0DEG
 Operators:Ben
 Test Date:2021-01-14

γ Range: 0 - 180DEG
 γ Interval: 1.0DEG
 Test System:EVERFINE GO-R5000_V2 SYSTEM V2.0.351
 Humidity:48%
 Test Distance:2.503m [K=1.0000]
 Remarks:

ISOLUX DIAGRAM

Test:U:230.1V I:0.0868A P:18.53W PF:0.9279 Lamp Flux:2526.91x1 lm		
NAME: LED Batten Light	TYPE:N/A	WEIGHT:N/A
SPEC.:N/A	DIM.: N/A	SERIAL No.:N/A
MFR.: ERS Technology	SUR.:N/A	Shielding Angle:N/A



C Range: 0 - 360DEG
 C Interval: 22.5DEG
 Test Speed: HIGH
 Temperature:25.0DEG
 Operators:Ben
 Test Date:2021-01-14

γ Range: 0 - 180DEG
 γ Interval: 1.0DEG
 Test System:EVERFINE GO-R5000_V2 SYSTEM V2.0.351
 Humidity:48%
 Test Distance:2.503m [K=1.0000]
 Remarks:

LED Avg.L Report

Test:U:230.1V I:0.0868A P:18.53W PF:0.9279 Lamp Flux:2526.91x1 lm		
NAME: LED Batten Light	TYPE:N/A	WEIGHT:N/A
SPEC.:N/A	DIM.: N/A	SERIAL No.:N/A
MFR.: ERS Technology	SUR.:N/A	Shielding Angle:N/A

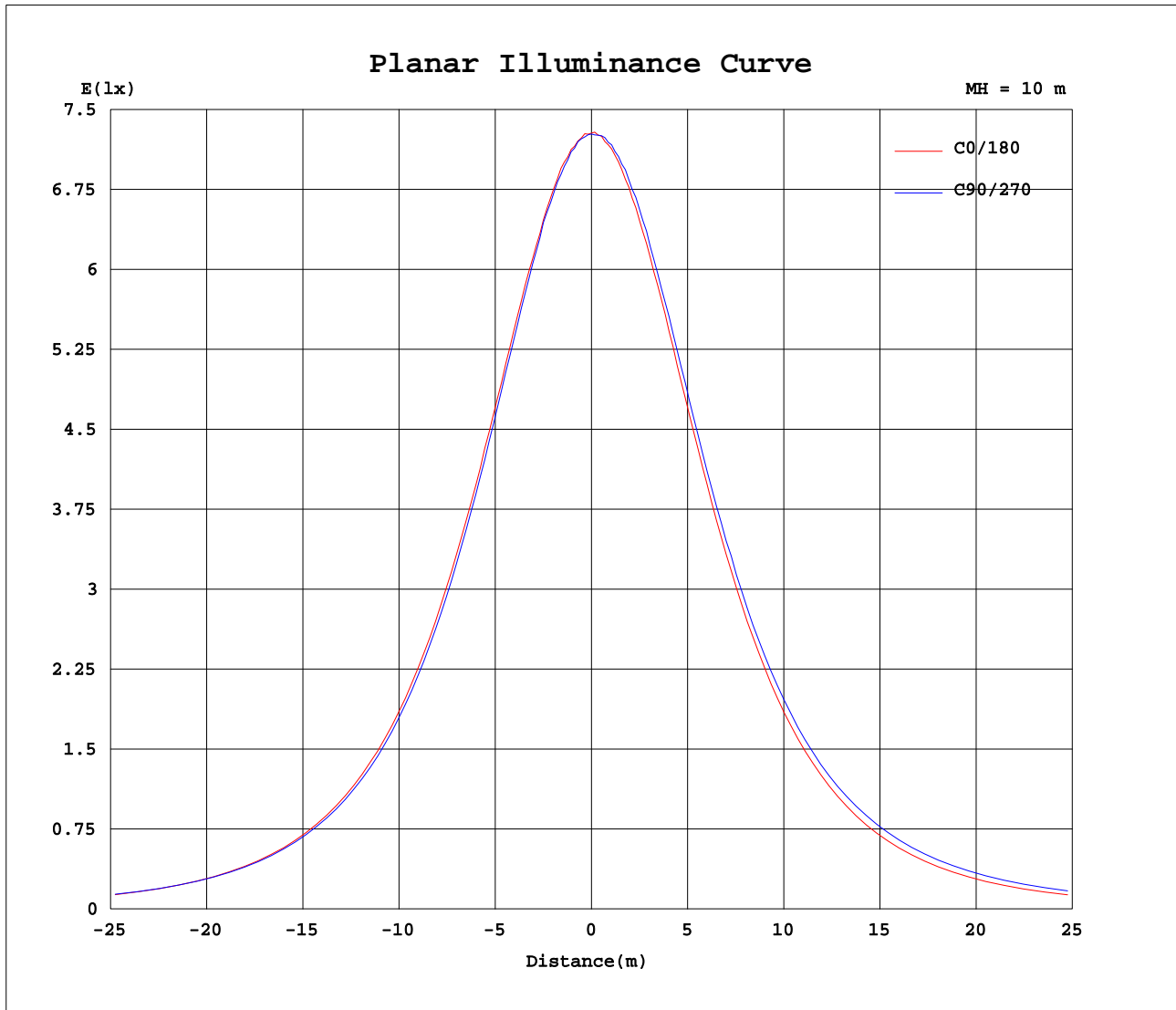
AvgL	cd/m2
L_0~180(65)av	5034
L_0~180(75)av	4323
L_0~180(85)av	2227
L_90~270(65)av	5592
L_90~270(75)av	5884
L_90~270(85)av	8976
L_45(65)av	5483
L_45(75)av	5478
L_45(85)av	6962

Standard: GB/T 29293-2012

C Range: 0 - 360DEG
 C Interval: 22.5DEG
 Test Speed: HIGH
 Temperature:25.0DEG
 Operators:Ben
 Test Date:2021-01-14

γ Range: 0 - 180DEG
 γ Interval: 1.0DEG
 Test System:EVERFINE GO-R5000_V2 SYSTEM V2.0.351
 Humidity:48%
 Test Distance:2.503m [K=1.0000]
 Remarks:

Planar Illuminance Curve



C Range: 0 - 360DEG
 C Interval: 22.5DEG
 Test Speed: HIGH
 Temperature: 25.0DEG
 Operators: Ben
 Test Date: 2021-01-14

γ Range: 0 - 180DEG
 γ Interval: 1.0DEG
 Test System: EVERFINE GO-R5000_V2 SYSTEM V2.0.351
 Humidity: 48%
 Test Distance: 2.503m [K=1.0000]
 Remarks:

LUMINOUS DISTRIBUTION INTENSITY DATA

Test:U:230.1V I:0.0868A P:18.53W PF:0.9279 Lamp Flux:2526.91x1 lm		
NAME: LED Batten Light	TYPE:N/A	WEIGHT:N/A
SPEC.:N/A	DIM.: N/A	SERIAL No.:N/A
MFR.: ERS Technology	SUR.:N/A	Shielding Angle:N/A

Table--1

UNIT: cd

C(DEG)\ γ (DEG)	0	22.5	45	67.5	90	112.5	135	157.5	180	202.5	225	247.5	270	292.5	315	337.5			
0	728	728	728	728	728	728	728	728	728	728	728	728	728	728	728	728			
5	723	723	723	723	722	723	723	724	725	727	727	728	728	728	726	726			
10	717	715	715	713	715	715	715	716	716	721	723	724	727	726	723	719			
15	703	703	701	701	699	701	700	701	704	708	712	715	717	717	712	707			
20	687	686	683	680	680	681	683	686	689	695	699	702	702	704	699	693			
25	664	662	660	657	655	655	657	661	664	673	680	684	684	684	678	670			
30	637	634	631	626	625	625	628	634	638	648	656	660	659	659	655	648			
35	606	603	597	594	591	591	595	601	605	616	625	630	629	628	625	615			
40	567	564	560	555	553	553	557	562	568	581	590	594	594	595	590	580			
45	524	521	517	512	508	509	513	519	522	539	551	556	556	556	549	537			
50	476	474	470	464	461	462	464	470	475	492	506	512	512	512	505	492			
55	422	421	419	415	411	410	413	416	419	441	458	466	466	464	456	440			
60	362	364	363	360	356	355	356	358	360	385	403	413	414	412	402	384			
65	298	302	304	302	299	296	296	294	294	323	346	357	359	357	344	322			
70	229	235	242	243	240	237	233	227	225	257	284	298	301	297	283	257			
75	158	168	179	183	181	177	169	159	153	189	221	239	243	238	220	190			
80	88.7	103	120	127	128	122	111	94.8	82.8	122	158	178	183	177	157	123			
85	29.2	50.5	72.2	85.1	88.7	81.9	66.3	43.5	24.8	62.7	100	123	129	122	99.2	64.1			
90	0.39	25.1	54.0	71.4	77.1	71.0	53.3	24.9	0.11	27.1	60.1	81.0	87.3	80.8	59.9	27.7			
95	0.22	21.3	48.9	66.3	71.7	65.6	48.1	21.2	0.11	22.2	50.9	68.9	74.8	69.1	50.9	22.4			
100	0.25	18.5	44.4	61.0	66.5	60.5	43.7	18.5	0.13	19.5	46.6	64.0	69.6	64.0	46.5	19.7			
105	0.30	16.3	40.1	56.0	60.9	55.4	39.6	16.3	0.17	17.3	42.5	59.1	64.5	59.1	42.4	17.3			
110	0.33	14.4	36.1	50.6	55.9	50.3	35.7	14.4	0.21	15.5	38.4	53.9	59.0	54.0	38.3	15.5			
115	0.35	12.7	32.4	45.9	50.3	45.4	32.0	12.7	0.27	13.9	34.5	48.9	53.8	49.0	34.4	13.8			
120	0.41	11.1	28.7	41.0	45.5	40.9	28.4	11.1	0.31	12.4	30.8	43.9	48.5	43.9	30.7	12.3			
125	0.50	9.63	25.3	36.5	40.3	36.3	25.1	9.65	0.40	11.0	27.3	39.0	43.3	39.2	27.2	10.9			
130	0.59	8.21	22.0	32.1	35.6	32.0	21.9	8.25	0.42	9.71	23.8	34.4	38.0	34.3	23.8	9.62			
135	0.73	6.95	18.9	27.8	30.9	27.6	18.8	6.98	0.48	8.37	20.6	29.8	33.1	30.0	20.7	8.46			
140	0.94	5.75	16.0	23.7	26.4	23.6	15.9	5.81	0.52	6.89	17.3	25.3	28.3	25.7	17.9	7.50			
145	1.13	4.72	13.2	19.7	22.0	19.7	13.2	4.41	0.58	5.15	14.0	20.8	23.7	21.8	15.5	6.91			
150	1.30	3.77	10.5	15.9	17.8	15.9	10.6	3.72	0.66	3.47	10.5	16.4	19.2	18.2	13.4	6.51			
155	1.45	2.96	8.02	12.2	13.7	12.2	8.06	2.85	0.80	2.03	7.28	12.2	15.0	14.8	11.4	6.16			
160	1.55	2.27	5.61	8.70	9.85	8.74	5.60	2.11	0.88	1.23	4.24	8.41	10.9	11.2	9.17	5.50			
165	1.56	1.80	3.53	5.51	6.26	5.53	3.05	1.67	0.94	1.01	2.47	5.01	7.28	7.77	6.63	4.17			
170	1.50	1.57	2.07	2.90	3.28	2.76	1.86	1.52	1.01	1.02	1.60	2.70	4.14	4.61	3.96	2.73			
175	1.39	1.39	1.46	1.58	1.60	1.48	1.44	1.41	1.12	1.13	1.26	1.57	1.89	2.21	1.97	1.57			
180	1.27	1.26	1.27	1.29	1.36	1.31	1.27	1.27	1.26	1.26	1.26	1.28	1.31	1.37	1.32	1.29			

C Range: 0 - 360DEG
 C Interval: 22.5DEG
 Test Speed: HIGH
 Temperature:25.0DEG
 Operators:Ben
 Test Date:2021-01-14

γ Range: 0 - 180DEG
 γ Interval: 1.0DEG
 Test System:EVERFINE GO-R5000_V2 SYSTEM V2.0.351
 Humidity:48%
 Test Distance:2.503m [K=1.0000]
 Remarks: